

SEWOO

PRODUCT GUIDE BOOK



Your Complete Hardware Solution Partner

SYSTEM
PRINTER
TERMINAL
SCANNER

sewoo



YOUR COMPLETE HARDWARE SOLUTION PARTNER

RETAIL

SEWOO Printing Solutions are widely used in various distribution sectors such as department stores, hypermarkets, and speciality retail stores for printing purposes including receipts, price tags (labels), and coupons.

TOURISM, DINING

SEWOO Printing Solutions are widely used in various sectors of the tourism and food service industry, including hotels, restaurants, and kitchens, for printing purposes such as receipts, kitchen printers, order labels, and ingredient labels.

TRANSPORTATION, LOGISTIC

SEWOO Printing Solutions are widely used in various sectors of the transportation and logistics industry, including warehouses, logistics centers, railway stations, and airports, for printing purposes such as parcel and logistics delivery receipts, in-flight duty-free receipts, baggage labels, notices, and airline bus terminal tickets.

HEALTHCARE

SEWOO Printing Solutions are widely used in various sectors of the healthcare industry, including hospitals, pharmacies, and medical research laboratories, for printing purposes such as patient information, examination results, symptoms, and prescription labels.

MANUFACTURING

SEWOO Printing Solutions are widely used in various sectors of the manufacturing industry, including warehouses, factories, and production sites, for printing purposes such as invoices and receipts, inventory management labels, product information labels, packaging labels, incoming/management labels, and component tag printing.

PUBLIC SECTOR

SEWOO Printing Solutions are widely used in various sectors of the public domain, including public institutions, police stations, military, and libraries, for printing purposes such as parking and traffic violation receipts/labels, and book location tags.

ON-SITE SERVICES

SEWOO Printing Solutions are widely used in various sectors of on-site services, including delivery shops and field service businesses, for printing purposes such as delivery receipts, on-site sales, and service receipts.



SOLUTIONS OVERVIEW



System

POS Hardware
ODS Solution

Printer

POS Printer
Mobile Printer
Label Printer

Terminal

Handheld Terminal
Tablet

Scanner

Wearable
Wired
Wireless



Unified POS & ODS system for streamlined operations

POS manages transactions and store operations in real time, while ODS streamlines order display and workflow management. Together, they create a unified system that improves accuracy, speed, and operational efficiency.

POS Hardware

Integrated hardware solutions for efficient retail transactions.



All-in-One
POS Terminal



Cash Drawer

ODS Solution

No changes to your system, Simply connect and go.



ODS-156

To meet evolving service demands, the retail and hospitality industries require high-performance POS systems with flexible mounting options for diverse application environments.

SEWOO POS systems enable businesses to attract large customers by delivering reliable, scalable, and adaptable POS solutions.

Our latest POS systems offer superior configurability, scalability, and powerful performance.

Key Feature



15" POS System, NBP-150

- Larger and clearer screen
- 1366 x 768 / 1920 x 1080P (optional)
- Display : 180 degrees vertical, high brightness
- A+ Grade touch screen
- Scratch-resistant and wear-resistant high-definition picture quality



Smart and Portable POS System, NBP-150/156 Flip

- Easy design to detach
- 7mm ultra-thin screen
- High performance processor
- Foldable and rotatable design
- All-aluminum design available in three colors
- Available customer display with just one cable
- Fanless operation with waved back cover design

Traditional Product



NBP-150

PRODUCT SPEC

SYSTEM CONFIGURATION	CPU	- Intel J4125 : Intel® Celeron® J4125, Quad Core 2.0Ghz [Fanless] - Intel J6412 : Intel® Celeron® J6412, Quad Core 2.0Ghz [Fanless] - Intel i3 : Intel® Core® i3-5th/ 10th/ 11th - Intel i5 : Intel® Core® i5-5th/ 10th/ 11th
	OS	Windows 10 IOT Enterprise (i3, i5), Windows 11 IOT Enterprise (J4125, J6412, N95)
MAIN	Memory	DDR4 4GB (Option: 8GB)
	Storage	2.5" SATA 128G SSD (Option: 256G/ 512G)
LCD		15* TFT LED
RESOLUTION		1024 x 768
CUSTOMER DISPLAY		VFD 2 line x 20 characters / LCD 2 line x 20 characters / LED Display characters : Single line display Support 8 number only
TOUCH SCREEN		15" Bezel-Free True-Flat Protective Capacitive Touch Screen
SECONDARY DISPLAY		10.1" IPS LCD, 15" TFT LCD
POWER		- DC-IN : Input AC 100~240V / 50~60hz, Output DC 12V/ 5A
STRUCTURAL PARAMETERS	INTERFACE	- Intel J4125 : VGA (1), RS232 (2), RJ45 (1), USB (6), RJ11 (1), HDMI(1) - Intel J6412 : VGA (1), RS232 (3), RJ45 (1), USB (6), RJ11 (1)or VGA(1), HDMI (1), RS232(2), RJ45(1), USB(6), RJ11(1) - Intel i3/i5 : VGA (1), RS232 (2), RJ45 (1), USB (6), HDMI (1) - Audio : 1 * Mic-in, 1 * Line-out
	SIZE	220mm x 190mm x 350mm (WxDxH)
	WEIGHT	7kg
CERTIFICATIONS	RELIABILITY	CE, RoHS, FCC
ACCESSORIES	OPTIONAL	- MSR : ISO 1,2,3 Tracks - Button : Dallas Key RS232 I/F - Finger Reader



NBP-156FLIP



NBP-150FLIP

PRODUCT SPEC

SYSTEM CONFIGURATION	CPU
	OS
	RAM
	SSD
	RESOLUTION
	LCD
	TOUCH
	CUSTOMER DISPLAY
	POWER
	WiFi
	Bluetooth
	STRUCTURAL PARAMETERS
PACKING SIZE	
INTERFACE	
ACCESSORIES	OPTIONAL

Windows : J6412 Quad core 2.0G, Intel N95: Quad core 1.7GHz- 3.4Ghz, i3-12th, i5-12th Android : RK3568 Quad core Cortex-A55 up to 2.0GHz
Windows : Windows 10 IOT Enterprise (i3, i5) Windows 11 IOT Enterprise (J4125, J6412, N95) Android : Android 11/Android 13
Windows : DDR4 4GB / 8GB / 16GB Android : 2GB RAM
Windows : m.2 128GB / 256GB / 512GB Android : 32GB / 128GB ROM
1366*768 P
15.6 inch LED
15.6 inch capacitive touch screen
2*20 VFD/ 11.6 inch customer display (1366*768, no touch)
12V/5A
2.4GHz only
BT 4.2 ver
1pcs: 3.8KG
1pcs: 43*18.5*42cm
Windows : J6412: RS232(2) ,USB(5), RJ45(1), HDMI(1), RJ11(2), HP_JACK(1), Only EDP (only for 2nd display)(1) N95: RS232(2), USB(5), RJ45(1), HDMI(1), RJ11(1) , Only EDP (only for 2nd display)(1), HP_ JACK(1) Android : RK3568 : UART7(com) : (2), RJ45(Ethernet) (1), USB : (5), TF_CARD(tf card) : (1), SIM card : (1), PHONE JACK : (1), MICROPHONE : (1), RJ11 : (1) i3-12th, i5-12th: IO panel is same. RS232(2) ,USB(5), RJ45(1), HDMI(1), RJ11(2), HP_JACK(1), Only EDP(only for 2nd display) (1)
Windows : MSR, Speaker*1, WiFi+BT, Speaker*1, RFID, Customer display (2x20 VFD, 11.6", 15.6") Android : Bluetooth, Wi-Fi, MSR, Speaker*1, Finger reader, RFID, Customer display (2x20 VFD, 11.6", 15.6"), 3G/4G Module

Windows : Intel N95: Quad core 1.7GHz- 3.4Ghz, J6412 Quad core 2.0G, i3-12th, i5-12th
Windows 10 IOT Enterprise (i3, i5) Windows 11 IOT Enterprise (J4125, J6412, N95)
Windows : DDR4 4GB / 8GB / 16GB
Windows : m.2 128GB / 256GB / 512GB
1024 * 768 P
15 inch LED
15 inch capacitive touch screen
2*20 VFD/ 11.6 inch customer display (1366*768, no touch)
12V/5A
2.4GHz only
BT 4.2 ver
1pcs: 3.8KG
1pcs: 42*19*42cm
Windows : J6412: RS232(2) ,USB(5), RJ45(1), HDMI(1), RJ11(2), HP_JACK(1), Only EDP (only for 2nd display)(1) N95: RS232(2), USB(5), RJ45(1), HDMI(1), RJ11(1), Only EDP (only for 2nd display)(1), HP_JACK(1) i3-12th, i5-12th: IO panel is same. RS232(2) ,USB(5), RJ45(1), HDMI(1), RJ11(2), HP_JACK(1), Only EDP(only for 2nd display) (1)
Windows : MSR, Speaker*1, WiFi+BT

Cash Drawer

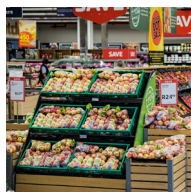
SEWOO Cash Drawers deliver secure and efficient cash management.

SEWOO Cash Drawer offers secure and efficient cash management across various industries, from retail and hospitality to service businesses. Seamlessly integrated with POS systems, it ensures fast and accurate transactions, while its durable build and advanced security features minimize risks of theft and loss.

Application



Retail



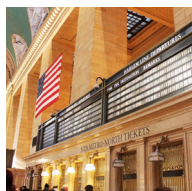
Supermarkets



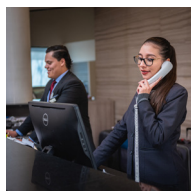
Restaurant



Pharmacy



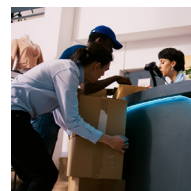
Transportation



Hospitality



Entertainment



Public Offices

Cash Drawer



S330E

PRODUCT SPEC

CASH DRAWER CHARACTERISTICS	COLOR	Black / Ivory or customization
	BILL TRAY/ COIN TRAY	4 Bill + 8 Coin One part bill tray can removable
	BILL LENGTH	171mm
	BILL WIDTH	Fixed as : 78/73/73/70
	BILL HOLDERS	Metal Wire Gripper
	CASING	Robust all steel construction
	INNER DRAWER	ABS plastic drawer
	MEDIA SLOT	Plastic panel, one media slot
	ROLLERS	Heavy duty plastic rollers
	KEY LOCK	Three-position Key Lock (2keys)
PHYSICAL CHARACTERISTICS	SOLENOID	24V Compatible
	EMERGENCY OPENER	Optional
	DIMENSION	335 x 368 x 80 (mm)
	WEIGHT	Net weight : 3.6kg
INTERFACES	I/O INTERFACE	RJ12 as Standard



S415H

PRODUCT SPEC

PERFORMANCE CHARACTERISTICS	COLOR	Black/White/Gray
	BILL TRAY/ COIN TRAY	4 Bill + 8 Coin
	INNER DRAWER	Plastic
	BILL HOLDERS	Metal Wire Gripper
	ROLLERS	Heavy Duty Plastic Rollers
	MEDIA SLOT	Single Slot / Double Slot
	MICRO SWITCH/ SENSOR	Open by driver signal to the solenoid (optional)
	CABLE CONNECTION	External Cable on Rear / Bottom (optional)
	EMERGENCY OPNER	Emergent Release Lever on The Chassis
	CABLE LENGTH	1.1 Meters
PHYSICAL CHARACTERISTICS	SOLENOID	24V Compatible
	DIMENSION	410 x 415 x 100 (mm)
	CASH TRAY DIMENSION	475 x 460 x 170 (mm)
	BILL TRAY DIMENSION	345 x 186 x 59 (mm)
INTERFACES	COIN TRAY DIMENSION	345 x 125 x 40.5 (mm)
	WEIGHT	5.2kg
	I/O INTERFACE	Standard : RJ12 Optional : USB

ODS Solution

No changes to your system, Simply connect and go.

ODS is an Android-based order display system that replaces traditional kitchen printers with a single tablet. There's no POS software development, no server setup, and a simple connection for a 1:1 replacement.

Key Benefits

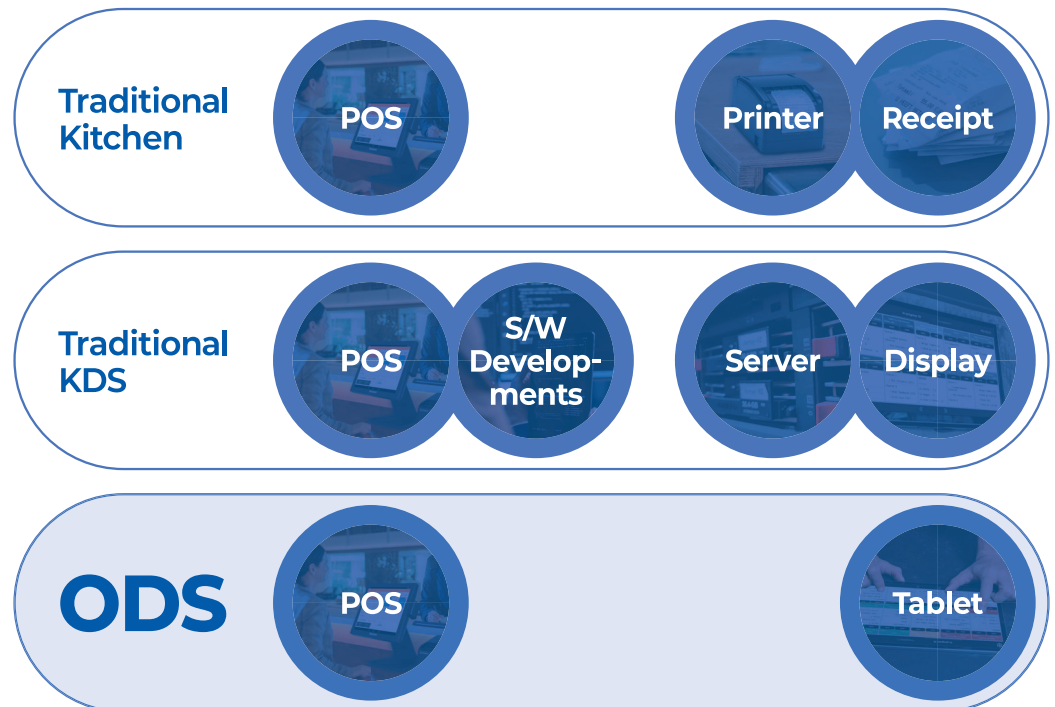


Simple, Plug-and-Play & Paperless Order Display System

- Easy-to-detach modular design
- 7mm ultra-thin screen
- High performance processor
- Foldable and rotatable structure
- All-aluminum chassis available in three colors
- Customer display support via a single cable
- Fanless operation with waved back-cover design

SEWOO ODS: From POS to Kitchen in One Step.

SEWOO ODS displays orders using just a tablet - no servers, printers, or extra software. Quick to install, and POS-ready without development. A smart, maintenance-free solution for any kitchen.



Unplug. Replace. Done.

The effortless way to bring digital order displays into your kitchen.
No server. No Prints. Just a Tablet.

with ODS

Key Feature



Compact, Slim & Kitchen-Ready ODS Display

- Exceptional performance powered by an advanced chipset
- 15.6-inch touchscreen with 1920 × 1080 Full HD resolution and full lamination
- All-metal heat-dissipation plate design
- Rear-mounted power button with a sealed design
- IP65-rated front-panel waterproof protection
- Power over Ethernet (PoE) support

I SYSTEM

II
III
IV

Professional ODS Hardware



ODS-156

PRODUCT SPEC

SYSTEM	Processor	Rockchip RK3576 Cortex-A72 + Quad-Core Cortex-A53 up to 2.2GHz
	Memory	4GB DDR4 Standard, 8GB Option
	Storage	32GB Standard, 64/128GB Option
	OS	Android 14 / Linux Operation System
DISPLAY	Type	15.6 Inch TFT LED Backlight
	Resolution	1920*1080
	Aspect Ratio	16:9
	Brightness	220 nits
	Surface Treatment	2.5D Glass
	Touchscreen	Projective Capacitive Touch Screen
INTERFACES	USB	2*USB3.0, 2*USB2.0
	LAN	1*RJ45 10/100M Ethernet
	TF Slot	1*TF Card Slot
	Audio	1*3.5mm Line-Out+MIC Audio Jack
	COM	1*RJ11(RS232), 1*DB9(RS232)
	Cash Drawer	1*RJ11
	Power DC-IN	Input AC 100~240V/50~60hz, Output DC 12V/3A
PHYSICAL & ENVIRONMENTAL	Operating Temperature	Operating 0~40° at 5% to 90% Humidity
	Storage Temperature	Storage -20°~60° at 10% to 90% Humidity
	Dimensions	(W×H×D) 377.98x227.98x43.90 MM
	Packing Dimensions	(W×H×D) 460.00x360.00x130.00 MM
	Net Weight	3.5KG
	Packing Weight	5.4KG
PERIPHERALS	Color	Matte Black/Silver
	Wifi	IEEE 802.11 b/g/n/ac, 2.4 GHz+5GHz
	Bluetooth	Bluetooth 4.2
	Speaker	2*8R/2W Speaker
	Mounting Options	Standard : VESA 75x75 (mm) Option : VESA 100x100 (mm)

ACCESSORIES Mount Options



Desktop Mount



Gooseneck Mount



Wall Mount Bracket



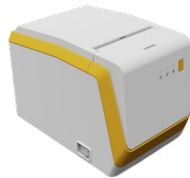
PRINTER

A versatile printer lineup designed for reliable business operations

SEWOO printers deliver stable printing performance across POS, receipt, and labeling applications. Designed with practicality in mind, they support efficient installation, operation, and maintenance across diverse business environments.

POS Printer

SEWOO POS printers are fast, reliable and versatile.



Linerless Printer



Rising New Product



Best Selling Products

Label Printer

SEWOO label printers cost-effective, reliable and adaptable.



External Paper Loading



Direct Thermal Printer



Thermal Transfer Printer

Mobile Printer

SEWOO Mobile printers are compact, long-lasting, versatile.



2-Inch Printer



3-Inch Printer



4-Inch Printer

POS Printer

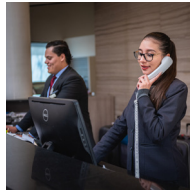
SEWOO POS printers are fast, reliable, and versatile.

SEWOO POS printers are fast, reliable, and deliver all the easy-to-use features: drop-in paper loading, compact design, ESC/POS compatibility and easy customization of software each important to the retail, hospitality, banking and food service industries.

Application



Retail



Hospitality

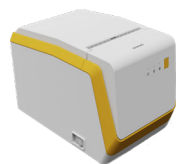


Banking & Others



Lottery & Coupon

Linerless Printer



SLK-SL103

Rising New Product



SLK-CB125

Unique Design, Best Selling Products



SLK-TS200



SLK-TS100



SLK-TS400

Traditional & Steady Selling Products



SLK-T12 Series



SLK-T20 Series



SLK-T21 Series



SLK-T32 Series

Slick & Fancy Product



SLK-TL100II

All Front Access & Exit Design

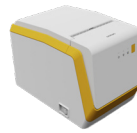


SLK-TE25

All Front Access & Exit Design



SLK-TE25



SLK-SL103

PRINTING SPEC

PRINTING	METHOD
	SPEED
EMULATION	WIDTH
	RESOLUTION
	DIRECTION

Direct thermal(Front & Top Exit)
Linerless : 200mm/s Receipt :250mm/s Liner Label : TBD
32 / 48 / 60 / 72 / 80 mm
203dpi
CPCL/ESC-POS/ZPL Command compatible

PAPER SPEC

PAPER	TYPE
	WIDTH
	THICKNESS
	ROLL DIAMETER

Thermal receipt paper,Blackmark, Linerless(Permanent), Gap Label, BluePaper
40 / 58 / 62 / 80 / 83 mm
ESC/POS : 0.05 ~ 0.08 mm CPCL/ZPL : 0.06 ~ 0.15 mm (TBD)
Max. ø 105mm

INTERFACE

INTERFACE	STANDARD
	OPTION

Standard : USB(B type) + Ethernet + Serial(RS-232 9pin) Option : USB(B type) + Serial(RS-232 9pin), USB(B type) + Ethernet Bluetooth Smart Ready(Bluetooth5.0+BLE), Wi-Fi(802.11a/b/g/n)

HARDWARE SPEC

POWER	TYPE
	AC
	DC
AUTO CUTTER	TYPE
	LIFE
SENSOR	STANDARD
CASH DRAWER	
RELIABILITY	TPH LIFE
	MCBF

External SMPS
100 ~ 240Vac 50/60 Hz
24Vdc / 1.75A
Guillotine
1,000,000 cuts
Paper end, Cover open, Paper width Detection, Gap, Take-off
2 circuits(24V, 1A Max.)
160km
60 Million lines

DIMENSION

DIMENSION	W x D x H (mm)
	W x D x H (inch)
WEIGHT	

145 x 146 X 213
57 x 57.5 x 83.8
57 x 57.5 x 83.8

ETC

ACCESSORIES

Melody box, 24V Internal/External Buzzer, Paper Guide 3types: - Standard : 80mm - Option: 62mm, 58mm

Rising New Products



SLK-CB125

PRINTING SPEC

PRINTING	METHOD
	SPEED
	WIDTH
	RESOLUTION
	DIRECTION
EMULATION	

Direct thermal
250mm/sec
80mm(640 Dots/Line)
203dpi
Unidirectional with friction feed
ESC/POS Command compatible

PAPER SPEC

PAPER	TYPE
	WIDTH
	THICKNESS
	ROLL DIAMETER

Thermal receipt paper / BluePaper
58mm / 80mm / 82.5mm
0.05 ~ 0.08mm
Max. ø 83mm

INTERFACE

INTERFACE	STANDARD
	OPTION

1. USB(B type)+Serial(RS232C_9pin) +Ethernet Built-in
2. USB(B type)+Serial(RS232C_9Pin) +RJ45(Serial)
Bluetooth Smart Ready(Bluetooth5.0+BLE) or WiFi(802.11 a/b/g/n) B/T, WF combo

HARDWARE SPEC

POWER	TYPE
	AC
	DC
AUTO CUTTER	TYPE
	LIFE
SENSOR	STANDARD
CASH DRAWER	
RELIABILITY	TPH LIFE
	MCBF

External SMPS
110 ~ 220Vac 50/60 Hz
24Vdc / 2.5A
Guillotine
2,000,000 cuts
Paper end, Cover open, Paper low(Front-Exit Mode Only)
2 circuits(24V, Max. 1A)
150km
80 Million lines

DIMENSION

DIMENSION	W x D x H (mm)
	W x D x H (inch)
WEIGHT	

125 x 131.5 x 125
4.92 x 5.17 x 4.92
0.91kg

ETC

ACCESSORIES

Melody box, 24V Buzzer, Paper Guide

Unique Design, Best Selling Products



SLK-TS200

Direct thermal
250mm/sec
72mm(576 Dots/Line)
203dpi
Unidirectional with friction feed
ESC/POS Command compatible

Thermal receipt paper / BluePaper
58mm / 80mm
0.05 ~ 0.08mm
Max. ø 83mm

1. USB(B type)+Serial(RS232C_9pin)+Ethernet Built-in
2. USB(B type)+Serial(RS232C_9Pin)+RJ45 (Serial)
Bluetooth Smart Ready(Bluetooth5.0+BLE) or WiFi(802.11 a/b/g/n)

External SMPS
110 ~ 220Vac 50/60 Hz
24Vdc / 2.5A
Guillotine
2,000,000 cuts
Paper end, Cover open
1 circuit(24V, Max. 1A) / 2 circuits(24V, Max. 1A)
150km
80 Million lines

136 x 174 x 132
5.35 x 6.85 x 5.19
1.04kg

Melody box, 24V Buzzer, Paper Guide

Unique Design, Best Selling Product



SLK-TS100



SLK-TS400

PRINTING SPEC

PRINTING	METHOD
	SPEED
	WIDTH
	RESOLUTION
	DIRECTION
EMULATION	

Direct thermal
220mm/sec
72mm(576 Dots/Line)
203dpi
Unidirectional with friction feed
ESC/POS Command compatible

Direct thermal
220mm/sec
72mm(576 Dots/Line)
180dpi
Unidirectional with friction feed
ESC/POS Command compatible

PAPER SPEC

PAPER	TYPE
	WIDTH
	THICKNESS
	ROLL DIAMETER

Thermal receipt paper / BluePaper
80mm
0.05 ~ 0.08mm
Max. ø 80mm

Thermal receipt paper / BluePaper
80mm
0.05 ~ 0.09mm
Max. ø 83mm

INTERFACE

INTERFACE	STANDARD
	OPTION

1. USB(B type)+Serial(RS232C_9pin) 2. USB(B type)+Serial(RS232C_9pin) +Ethernet Built-in 3. USB(B type)+Serial(RS232C_9Pin) +RJ45(Serial)
-

1.USB(B type)+Serial(RS-232C_25pin) 2. USB(B type)+Serial(RS-232C_25pin) + Ethernet Built-in 3. USB(B type) + Ethernet 4. USB(B type) + Ethernet Built-in Wi-Fi(802.11a/b/g/n), Bluetooth Smart Ready (Bluetooth5.2+BLE)

HARDWARE SPEC

POWER	TYPE
	AC
	DC
AUTO CUTTER	TYPE
	LIFE
SENSOR	STANDARD
CASH DRAWER	
RELIABILITY	TPH LIFE
	MCBF

External SMPS
110 ~ 220Vac 50/60 Hz
24Vdc / 2.5A
Guillotine
1,500,000 cuts
Paper end, Cover open
1 circuit(24V, Max. 1A) / 2 circuits(24V, Max. 1A)
100km
80 Million lines

External SMPS
100 ~ 240Vac 50/60 Hz
24Vdc / 1.75A
Guillotine
2,000,000 cuts
Paper end, Cover open
2 circuits(24V, Max. 1A)
160km
60 Million lines

DIMENSION

DIMENSION	W x D x H (mm)
	W x D x H (inch)
WEIGHT	

142 x 185 x 136
5.59 x 7.28 x 5.35
1.02kg

130 x 140 x 154
5.11 x 5.51 x 6.06
1.25kg

ETC

ACCESSORIES

Melody box, 24V Buzzer, Paper Guide

USB to VCOM : Support, LAN to VCOM : Unsupport



SLK-T12 Series

PRINTING SPEC

PRINTING	METHOD
	SPEED
	WIDTH
	RESOLUTION
	DIRECTION
EMULATION	

Direct thermal
Max. 220mm/sec / Linerless Max. 160mm/sec
72mm / 72mm(80mm)
180 / 203DPI
Unidirectional with friction feed
ESC/POS Command compatible

PAPER SPEC

PAPER	TYPE
	WIDTH
	THICKNESS
	ROLL DIAMETER

Thermal receipt paper / Linerless(Optional)-MAXSTICK X2 / BluePaper
50 ~ 82.5mm
0.05 ~ 0.09mm
Max. ø 80mm

INTERFACE

INTERFACE	STANDARD
	OPTION

SLK-TE122: USB(B type)
SLK-TL122: USB(B type)+Serial(RS-232C_9pin) Built-in
SLK-T12EB: USB(B type)+Serial(RS-232C_9pin)+Ethernet Built-in
SLK-TE122: Serial(RS-232C), Parallel(IEEE1284), Ethernet, Wi-Fi(802.11 a/b/g/n), Bluetooth Smart Ready(Bluetooth5.2+BLE)
SLK-TL122,SLK-T12EB: -

HARDWARE SPEC

POWER	TYPE
	AC
	DC
AUTO CUTTER	TYPE
	LIFE
SENSOR	STANDARD
CASH DRAWER	
RELIABILITY	TPH LIFE
	MCBF

External SMPS
100 ~ 240Vac 50/60 Hz
24Vdc / 1.75A
Guillotine
2,000,000 cuts / Linerless-1,000,000 cuts
Paper end, Paper low, Cover open
2 circuits(24V, 1A Max.)
160km
60 Million lines

DIMENSION

DIMENSION	W x D x H (mm)
	W x D x H (inch)
WEIGHT	

152 x 202 x 150.5
5.98 x 7.95 x 5.91
1.7kg

ETC

ACCESSORIES

USB to VCOM : Support, LAN to VCOM : Unsupport
--



SLK-T20 Series

PRINTING SPEC

PRINTING	METHOD
	SPEED
EMULATION	WIDTH
	RESOLUTION
	DIRECTION
	EMULATION

Direct thermal
SLK-TE202 II, SLK-TL202 II, SLK-T20EB II : Max. 220mm/sec / Linerless Max. 160mm/sec
SLK-TE203, SLK-TL203, SLK-T203EB: 250mm/sec(203DPI), 300mm/sec(180DPI)
72mm / 72mm(80mm)
180 / 203DPI
Unidirectional with friction feed
ESC/POS Command compatible

PAPER SPEC

PAPER	TYPE
	WIDTH
	THICKNESS
	ROLL DIAMETER

Thermal receipt paper / Linerless(Optional)-MAXSTICK X2 / BluePaper
50 ~ 82.5mm
0.05 ~ 0.09mm
Max. ø 80mm

INTERFACE

INTERFACE	STANDARD
	OPTION

SLK-TE202 II, SLK-TE203: USB(B type)
SLK-TL202 II, SLK-TL203: USB(B type)+Serial(RS-232C_9pin) Built-in
SLK-T20EB II, SLK-T203EB: USB(B type)+Serial(RS-232C_9pin)+Ethernet Built-in
SLK-TE202 II, SLK-TE203: Serial(RS-232C), Parallel(IEEE1284), Ethernet, Wi-Fi(802.11 a/b/g/n), Bluetooth Smart Ready(Bluetooth5.2+BLE)
SLK-TL202 II, SLK-TL203, SLK-T20EB II, SLK-T203EB :

HARDWARE SPEC

POWER	TYPE
	AC
	DC
AUTO CUTTER	TYPE
	LIFE
SENSOR	STANDARD
CASH DRAWER	
RELIABILITY	TPH LIFE
	MCBF

External SMPS
110 ~ 220Vac 50/60 Hz
24Vdc / 1.75A
Guillotine
2,000,000 cuts / Linerless-1,000,000 cuts
Paper end, Paper low, Cover open
2 circuits(24V, 1A Max.)
160km / Linerless 100km
60 Million lines

DIMENSION

DIMENSION	W x D x H (mm)
	W x D x H (inch)
WEIGHT	

156 x 206 x 155
6.14 x 8.11 x 6.10
1.7kg

ETC

ACCESSORIES

Melody box, 24V Buzzer, Paper Guide



SLK-T21 Series

PRINTING SPEC

PRINTING	METHOD
	SPEED
	WIDTH
	RESOLUTION
	DIRECTION
EMULATION	

Direct thermal
SLK-TE212 II, SLK-TL212 II, SLK-T21EB II: Max. 220mm/sec / Linerless Max. 160mm/sec
SLK-TE213, SLK-TL213, SLK-T213EB: 250mm/sec(203DPI), 300mm/sec(180DPI)
72mm / 72mm(80mm)
180 / 203DPI
Unidirectional with friction feed
ESC/POS Command compatible

PAPER SPEC

PAPER	TYPE
	WIDTH
	THICKNESS
	ROLL DIAMETER

Thermal receipt paper / Linerless(Optional)-MAXSTICK X2 / BluePaper
50 ~ 82.5mm
0.05 ~ 0.09mm
Max. ø 80mm

INTERFACE

INTERFACE	STANDARD
	OPTION

SLK-TE212 II, SLK-TE213: USB(B type)
SLK-TL212 II, SLK-TL213: USB(B type)+Serial(RS-232C_9pin)Built-in
SLK-T21EB II, SLK-T213EB: USB(B type)+Serial(RS-232C_9pin)+Ethernet Built-in
SLK-TE212 II, SLK-TE213: Serial(RS-232C),Parallel(IEEE 1284),Ethernet, Wi-Fi(802.11a/b/g/n), Bluetooth Smart Ready(Bluetooth5.2+BLE)
SLK-TL212 II, SLK-TL213, SLK-T21EB II, SLK-T213EB: -

HARDWARE SPEC

POWER	TYPE
	AC
	DC
AUTO CUTTER	TYPE
	LIFE
SENSOR	STANDARD
CASH DRAWER	
RELIABILITY	TPH LIFE
	MCBF

External SMPS
110 ~ 240Vac 50/60 Hz
24Vdc / 1.75A
Guillotine
2,000,000 cuts / Linerless-1,000,000 cuts
Paper end, Paper low, Cover open
2 circuits(24V, 1A Max.)
160km / Linerless 100km
60 Million lines

DIMENSION

DIMENSION	W x D x H (mm)
	W x D x H (inch)
WEIGHT	

152 x 204 x 150
5.98 x 8.03 x 5.82
1.7kg

ETC

ACCESSORIES

Melody box, 24V Buzzer, Paper Guide



SLK-T32 Series

PRINTING SPEC

PRINTING	METHOD
	SPEED
	WIDTH
	RESOLUTION
	DIRECTION
EMULATION	

Direct thermal
SLK-TE322 II, SLK-TL322 II, SLK-T32EB II: Max. 220mm/sec / Linerless Max. 160mm/sec
SLK-TE323, SLK-TL323, SLK-T323EB: 250mm/sec(203DPI), 300mm/sec(180DPI)
72mm / 72mm(80mm)
180 / 203DPI
Unidirectional with friction feed
ESC/POS Command compatible

PAPER SPEC

PAPER	TYPE
	WIDTH
	THICKNESS
	ROLL DIAMETER

Thermal receipt paper / Linerless(Optional)-MAXSTICK X2 / BluePaper
50 ~ 82.5mm
0.05 ~ 0.09mm
Max. ø 80mm

INTERFACE

INTERFACE	STANDARD
	OPTION

SLK-TE322 II, SLK-TE323: USB(B type)
SLK-TL322 II, SLK-TL323: USB(B type)+Serial(RS-232C_9pin) Built-in
SLK-T32EB II, SLK-T323EB: USB(B type)+Serial(RS-232C_9pin)+Ethernet Built-in
SLK-TE322 II, SLK-TE323: Serial(RS-232C), Parallel(IEEE1284), Ethernet, Wi-Fi(802.11 a/b/g/n), Bluetooth Smart Ready(Bluetooth5.2+BLE)
SLK-TL322 II, SLK-TL323, SLK-T32EB II, SLK-T323EB: -

HARDWARE SPEC

POWER	TYPE
	AC
	DC
AUTO CUTTER	TYPE
	LIFE
SENSOR	STANDARD
CASH DRAWER	
RELIABILITY	TPH LIFE
	MCBF

External SMPS
100 ~ 240Vac 50/60 Hz
24Vdc / 1.75A
Guillotine
2,000,000 cuts / Linerless-1,000,000 cuts
Paper end, Paper low, Cover open
2 circuits(24V, 1A Max.)
150km
80 Million lines

DIMENSION

DIMENSION	W x D x H (mm)
	W x D x H (inch)
WEIGHT	

136 x 174 x 132
5.35 x 6.85 x 5.19
1.04kg

ETC

ACCESSORIES

Melody box, 24V Buzzer, Paper Guide

Slick & Fancy Product



SLK-TL100II

2-Inch POS Printer



SLK-T42

PRINTING SPEC

PRINTING	METHOD
	SPEED
	WIDTH
	RESOLUTION
	DIRECTION
EMULATION	

Direct thermal
200mm/sec
72mm(512 Dots/Line)
180 DPI
Unidirectional with friction feed
ESC/POS Command compatible

Direct thermal
200mm/sec
54mm(432Dots/Line)
203 DPI
Unidirectional with friction feed
ESC/POS Command compatible

PAPER SPEC

PAPER	TYPE
	WIDTH
	THICKNESS
	ROLL DIAMETER

Thermal receipt paper / BluePaper
79mm ± 0.5mm
0.05 ~ 0.09mm
Max. ø 83mm

Thermal receipt paper
59mm ± 0.5mm
0.06 ~ 0.09mm
Max. ø 60mm

INTERFACE

INTERFACE	STANDARD
	OPTION

USB(B type)+Serial(RS-232C_9pin) Built-in
Bluetooth Smart Ready (Bluetooth5.2+BLE)

USB(A type)+Serial(RS-232C_9pin) Built-in
-

HARDWARE SPEC

POWER	TYPE
	AC
	DC
AUTO CUTTER	TYPE
	LIFE
SENSOR	STANDARD
CASH DRAWER	
RELIABILITY	TPH LIFE
	MCBF

External SMPS
100 ~ 240Vac 50/60 Hz
24Vdc / 1.75A
Guillotine
2,000,000 cuts
Paper end, Paper low, Cover open
2 circuits(24V, 1A Max.)
160km
60 Million lines

External SMPS
100 ~ 240Vac 50/60 Hz
24Vdc / 1.75A
Guillotine
1,000,000 cuts
Paper end, Cover open
2 circuits(24V, 1A Max.)
100km
60 Million lines

DIMENSION

DIMENSION	W x D x H (mm)
	W x D x H (inch)
WEIGHT	

136 x 165 x 111
5.35 x 6.49 x 4.37
1.0kg

120 x 182 x 106
4.7 x 7.16 x 4.17
0.88kg

ETC

ACCESSORIES

Melody box, 24V Buzzer, Paper Guide

24V Buzzer

**SLK-TE25****PRINTING SPEC**

PRINTING	METHOD
	SPEED
	WIDTH
	RESOLUTION
	DIRECTION
EMULATION	

Direct thermal
200mm/sec
72mm(512 Dots/Line)
180 DPI
Unidirectional with friction feed
ESC/POS Command compatible

PAPER SPEC

PAPER	TYPE
	WIDTH
	THICKNESS
	ROLL DIAMETER

Thermal receipt paper / BluePaper
59mm / 80mm
0.06 ~ 0.09mm
Max. ø 83mm

INTERFACE

INTERFACE	STANDARD
	OPTION

USB(B type)
Serial(RS-232C), Parallel(IEEE1284), Ethernet, Wi-Fi(802.11b), Bluetooth Smart Ready (Bluetooth5.2+BLE)

HARDWARE SPEC

POWER	TYPE
	AC
	DC
AUTO CUTTER	TYPE
	LIFE
SENSOR	STANDARD
CASH DRAWER	
RELIABILITY	TPH LIFE
	MCBF

External SMPS
100 ~ 240Vac 50/60 Hz
24Vdc / 1.75A
Guillotine
2,000,000 cuts
Paper end, Paper low, Cover open
2 circuits(24V, 1A Max.)
160km
60 Million lines

DIMENSION

DIMENSION	W x D x H (mm)
	W x D x H (inch)
WEIGHT	

112.5 x 200 x 125
4.42 x 7.87 x 4.92
1.4kg

ETC

ACCESSORIES

Melody box, 24V Buzzer, Paper Guide

Accessories

Interface Cable



USB Cable



Serial Cable

Paper Guide/ Spill Proof Cover



SLK-T12 Series,
SLK-T20 Series



SLK-CB125, SLK-TS200,
SLK-TS100, SLK-T12 Series,
SLK-T20 Series, SLK-T32 Series,
SLK-TL100II, SLK-TE25

Melody Box



24V Buzzer



SMPS



SMPS



AC cord

Mobile Printer

SEWOO mobile printers are compact, long-lasting, and field-ready.

Built for mobility and durability, SEWOO mobile printers are ideal for on-the-go operations across logistics, delivery, retail, and field service applications.

Application

Receipt



Delivery



Retail

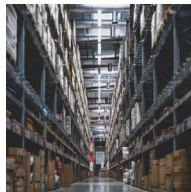


Transportation



Penalty

Receipt / Label



Logistics



Hospital



Retail



Parking

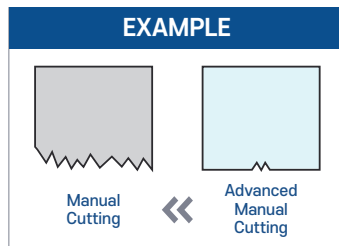
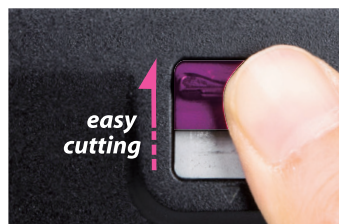
Key Feature



Compact sized design with excellent durability

SEWOO Mobile printers provide both a rugged design and strong durability that are optimized for mobile use. They are drop resistant from up to 2.1m (onto concrete) and are IP54 certified. Our printers also provide high-speed printing at 80mm-127mm per second. The compact design allows for one-handed use and a secure grip that will make carrying convenient.

AMC (Advanced Manual Cutter) Technology



- Receipt Mobile Printer
- Prints at 100mm/s
- Strong and Powerful Design against Dust and Water (LK-P24 : IP43, LK-P34 : IP54)
- Long Battery Life (LK-P24 : 1,450mAh, LK-P34 : 2,000mAh)
- Easy Bluetooth connection setting by using NFC Function!
- Light Weight

Premium Mobile Printer (LK-P300, LK-P400)

- Best-in-Class: Fast, Compact Size, Light Weight
- Rugged and Powerful
IP54/2M, 2.1M drop tested, Printing at 127mm/sec
- OS-based platform; Supports S-MDM
- Triple Interface built-in
USB, Wi-Fi (802.11a/b/g/n/ac) and Bluetooth Smart Ready
Combo (Bluetooth 4.2+BLE+NFC Tag)
- Compatible with Variety Media Types Label/Liner-less/Receipt papers
- USB-C type charging (P300)



	2-inch Printer	3-inch Printer	4-inch Printer
--	----------------	----------------	----------------



Economic



Semi Industrial



Rugged



High-End



Premium



2-Inch Printer



LK-P201

PRINTING SPEC

PRINTING	METHOD
	SPEED
	WIDTH
	RESOLUTION

Direct thermal
127mm/sec
48mm, 384 Dots/line
203 DPI
ESC/POS, CPCL, ZPL Command compatible

EMULATION

PAPER SPEC

PAPER	TYPE
	WIDTH
	THICKNESS
	ROLL DIAMETER
	ROLL CORE INNER DIAMETER

Thermal Receipt/Label/Linerless Permanent
10~58mm
TBD (0.06~0.15mm)
Max. Ø 57mm
12.5mm ± 0.5mm

INTERFACE

INTERFACE	STANDARD
	OPTION

USB C Type, NFC Tag
Wi-Fi(802.11a/b/g/n/ac), Bluetooth Smart Ready(Bluetooth5.0+BLE)

HARDWARE SPEC

MEMORY	FLASH(MAX.)
	RAM

8MB(Max 64MB)
SDRAM 16MB(Max 64MB)

BATTERY CHARGER

AC/DC Adapter(Option) 5V / 2A

BATTERY

7.2V 3,250mAh(smart battery : option) xxHrs Charging time xxHrs Stand-by
--

SENSOR	STANDARD
--------	----------

Paper end, Gap, Black mark, Peeler, take off
--

RELIABILITY	TPH LIFE
-------------	----------

50km

TEMPERATURE	OPERATING TEMPERATURE
	STORAGE TEMPERATURE

-20 ~ 55°C
-30 ~ 65°C

HUMIDITY	OPERATING HUMIDITY
	STORAGE HUMIDITY

10 ~ 80%
10 ~ 90%

IP	IP54 certified
----	----------------

DROP	2.0m(set only)
------	----------------

LCD	TBD
-----	-----

DIMENSION

DIMENSION	W x D x H (mm)
	W x D x H (inch)

TBD
TBD

WEIGHT	TBD
--------	-----

ETC

OPTION	Peeler, Linerless, Battery cradle, Set cradle, Adaptor
--------	--

Peeler, Linerless, Battery cradle, Set cradle, Adaptor
--

2-Inch Printer



LK-P12II



LK-P22

PRINTING SPEC

PRINTING	METHOD
	SPEED
	WIDTH
	RESOLUTION

Direct thermal
127mm/sec
48mm, 384 Dots/line
203 DPI

Direct thermal
100mm/sec
48mm, 384 Dots/line
203 DPI

EMULATION

ESC/POS, CPCL, ZPL Command compatible

ESC/POS, CPCL, ZPL Command compatible

PAPER SPEC

PAPER	TYPE
	WIDTH
	THICKNESS
	ROLL DIAMETER
	ROLL CORE INNER DIAMETER

Thermal Receipt/Label
12.7~58mm
0.06~0.16mm
Max. Ø 56mm
12.5mm ± 0.5mm

Thermal Receipt
58mm
0.06mm
Max. Ø 40mm
12.5mm ± 0.5mm

INTERFACE

INTERFACE	STANDARD
	OPTION

Serial(RS-232C), USB
Wi-Fi(802.11a/b/g/n),
Bluetooth Smart Ready(Bluetooth5.2+BLE)

USB
Wi-Fi(802.11a/b/g/n),
Bluetooth Smart Ready(Bluetooth5.2+BLE)

HARDWARE SPEC

MEMORY	FLASH(MAX.)
	RAM

16MB(Max 64MB)
SDRAM 16MB (MAX.64MB)

8MB(Max 64MB)
SDRAM 8MB

BATTERY CHARGER

AC/DC Charger 8.4V / 1A

AC/DC Charger 8.4V / 1A

BATTERY

7.2V 3350mAh Li-ion
4Hrs Charging time
90Hrs Stand-by (with Bluetooth)

7.4V 1450mAh Li-ion
1.7 Hrs Charging time
36 Hrs Stand-by

SENSOR	STANDARD
--------	----------

Paper end, Gap, Black mark, Cover open, Peeler detect, Peeler S/W

Paper end, Cover open

RELIABILITY	TPH LIFE
-------------	----------

50km

50km

TEMPERATURE	OPERATING TEMPERATURE
	STORAGE TEMPERATURE

-10 ~ 50°C

-10 ~ 50°C

-20 ~ 60°C

-20 ~ 60°C

HUMIDITY	OPERATING HUMIDITY
	STORAGE HUMIDITY

10 ~ 90%

10 ~ 80%

10 ~ 90%

10 ~ 90%

IP	IP42 certified
----	----------------

IP42 certified

DROP	1.5m(set only)
------	----------------

1.5m(set only), 1.8m(with case)

LCD	FSTN LCD 128 x 64 dots
-----	------------------------

-

DIMENSION

DIMENSION	W x D x H (mm)
	W x D x H (inch)

104×158×85

80×119.4×44

4.1×6.22×3.34

3.14×4.70×1.73

WEIGHT	580g (with battery)
--------	---------------------

242.5g (With Battery)

ETC

OPTION	
--------	--

Peeler, RTC
Battery Cradle, 4 Bay Cradle

Set cradle, Battery cradle

2-Inch Printer



LK-P24



LK-P25II

PRINTING SPEC

PRINTING	METHOD
	SPEED
	WIDTH
	RESOLUTION
EMULATION	

Direct thermal	
100mm/sec	
48mm, 384 Dots/line	
203 DPI	
ESC/POS, CPCL, ZPL Command compatible	

Direct thermal	
80mm/sec	
48mm, 384 Dots/line	
203 DPI	
ESC/POS, CPCL, ZPL Command compatible	

PAPER SPEC

PAPER	TYPE
	WIDTH
	THICKNESS
	ROLL DIAMETER
	ROLL CORE INNER DIAMETER

Thermal Receipt
58mm
0.06mm
Max. Ø 40mm
12.5mm ± 0.5mm

Thermal paper
58mm
0.06mm
Max. Ø 40mm
12.5mm ± 0.5mm

INTERFACE

INTERFACE	STANDARD
	OPTION

USB, NFC Tag
Wi-Fi(802.11a/b/g/n), Bluetooth Smart Ready(Bluetooth5.2+BLE)

USB C Type, Bluetooth Smart Ready(Bluetooth5.2+BLE), NFC Tag
-

HARDWARE SPEC

MEMORY	FLASH(MAX.)
	RAM

8MB(Max 64MB)
SDRAM 8MB

8MB(Max 64MB)
SRAM 8MB

BATTERY CHARGER
BATTERY

AC/DC Charger 8.4V / 1A
7.4V 1450mAh Li-ion 1.7 Hrs Charging time 36 Hrs Stand-by

AC/DC Adapter 5V / 1A
3.6V 3250mAh Li-ion 4 Hrs Charging time(Charger) 6 Hrs Charging time(USB), 63 Hrs Stand-by

SENSOR	STANDARD
--------	----------

Paper end, Black mark sensor

Paper end, Cover open(Black mark sensor)
--

RELIABILITY	TPH LIFE
-------------	----------

50km

50km

TEMPERATURE	OPERATING TEMPERATURE
	STORAGE TEMPERATURE

-10 ~ 50°C
-20 ~ 60°C

-10 ~ 50°C
-20 ~ 60°C

HUMIDITY	OPERATING HUMIDITY
	STORAGE HUMIDITY

10 ~ 80%
10 ~ 90%

10 ~ 80%
10 ~ 90%

IP

IP43 certified

IP54 With Case

DROP

1.5m(set only)

1.5m(set only) / 1.8m(with case)

LCD

-

-

DIMENSION

DIMENSION	W x D x H (mm)
	W x D x H (inch)

81.5×121.4×45.3
3.2×4.77×1.78

79×103.2×44.4
3.1×4.06×1.74

WEIGHT

264.1g (With Battery)

190g - TBD

ETC

OPTION

Set cradle, Battery cradle

-

2-Inch Printer



LK-P20II

3-Inch Printer



LK-P30II

PRINTING SPEC

PRINTING	METHOD
	SPEED
	WIDTH
	RESOLUTION
EMULATION	

Direct thermal	
80mm/sec	
48mm, 384 Dots/line	
203 DPI	
ESC/POS, CPCL, ZPL Command compatible	

Direct thermal	
100mm/sec	
72mm, 576 Dots/line	
203 DPI	
ESC/POS, CPCL, ZPL Command compatible	

PAPER SPEC

PAPER	TYPE
	WIDTH
	THICKNESS
	ROLL DIAMETER

Thermal Receipt
25~58mm
0.06-0.09mm
Max. Ø 48mm

Thermal Receipt
25 ~ 80mm
0.06~0.16mm
Max. Ø 56mm

INTERFACE

INTERFACE	STANDARD
	OPTION

Serial(RS-232C), USB Wi-Fi(802.11a/b/g/n), Bluetooth Smart Ready(Bluetooth5.2+BLE)
--

Serial(RS-232C), USB Wi-Fi(802.11a/b/g/n), Bluetooth Smart Ready(Bluetooth5.2+BLE)
--

HARDWARE SPEC

MEMORY	FLASH(MAX.)
	RAM

16MB (MAX.32MB)
SDRAM 8MB

16MB(Max.32MB)
SDRAM 8MB

BATTERY CHARGER

BATTERY

AC/DC Charger 8.4V / 1A
7.4V 2000mAh Li-ion 2.7 Hrs Charging time 61Hrs Stand-by

AC/DC Charger 8.4V / 1A
7.2V 3350mAh Li-ion 4Hrs Charging time 90Hrs Stand-by (with Bluetooth)

SENSOR	STANDARD
--------	----------

Paper end

Paper end, Black mark, Cover open, Gap
--

RELIABILITY	TPH LIFE
-------------	----------

50km

50km

TEMPERATURE	OPERATING TEMPERATURE
	STORAGE TEMPERATURE

-10 ~ 50°C

-10 ~ 50°C

-20 ~ 60°C

-20 ~ 60°C

HUMIDITY	OPERATING HUMIDITY
	STORAGE HUMIDITY

10 ~ 80%

10 ~ 80%

10 ~ 80%

10 ~ 90%

IP

IP42, IP54(with case)-P20 certified

IP42, IP54(with case) certified

DROP

1.2m(set only), 1.8(with case)

1.2m(set only), 1.8(with case)

LCD

-

-

DIMENSION

DIMENSION	W x D x H (mm)
	W x D x H (inch)

96×139×62

120×152×70

3.66×5.43×2.44

4.72×5.98×2.75

WEIGHT

440g (with battery)

640g (with Battery)

ETC

OPTION

MSR, IC Card Reader, RTC, Battery Cradle (P20), 4 Bay Cradle

MSR, IC Card Reader, RTC, Battery Cradle (P30), 4 Bay Cradle

3-Inch Printer



LK-P34



LK-P34L

PRINTING SPEC

PRINTING	METHOD
	SPEED
	WIDTH
	RESOLUTION

Direct thermal
100mm/sec
72mm, 576 Dots/line
203 DPI

Direct thermal
100mm/sec
72mm, 576 Dots/line
203 DPI

EMULATION

ESC/POS, CPCL, ZPL Command compatible

ESC/POS, CPCL, ZPL Command compatible

PAPER SPEC

PAPER	TYPE
	WIDTH
	THICKNESS
	ROLL DIAMETER
	ROLL CORE INNER DIAMETER

Thermal Receipt
80mm (PAPER GUIDE : 58mm)
0.06mm
Max. Ø 50mm
12.5mm ± 0.5mm

Thermal Receipt/Label/Linerless(Max. Restick)
80mm (PAPER GUIDE : 58mm)
0.06mm~0.16mm
Max. Ø 50mm
12.5mm ± 0.5mm

INTERFACE

INTERFACE	STANDARD
	OPTION

USB, NFC Tag
Wi-Fi(802.11a/b/g/n), Bluetooth Smart Ready(Bluetooth5.2+BLE)

USB, NFC Tag
Wi-Fi(802.11a/b/g/n), Bluetooth Smart Ready(Bluetooth5.2+BLE)

HARDWARE SPEC

MEMORY	FLASH(MAX.)
	RAM

8MB(Max 64MB)
SDRAM 8MB (MAX.16MB)

8MB(Max 64MB)
SDRAM 8MB (MAX.16MB)

BATTERY CHARGER

AC/DC Charger 8.4V / 1A

AC/DC Charger 8.4V / 1A

BATTERY

7.4V 2,000mAh Li-ion 2.7 Hrs Charging time 61 Hrs Stand-by
--

7.4V 2,000mAh Li-ion 2.7 Hrs Charging time 61 Hrs Stand-by
--

SENSOR	STANDARD
--------	----------

Paper end, Black mark sensor

Paper end, Black mark sensor

RELIABILITY	TPH LIFE
-------------	----------

50km

50km

TEMPERATURE	OPERATING TEMPERATURE
-------------	-----------------------

-10 ~ 50°C

-10 ~ 50°C

TEMPERATURE	STORAGE TEMPERATURE
-------------	---------------------

-20 ~ 60°C

-20 ~ 60°C

HUMIDITY	OPERATING HUMIDITY
----------	--------------------

10 ~ 80%

10 ~ 80%

HUMIDITY	STORAGE HUMIDITY
----------	------------------

10 ~ 90%

10 ~ 90%

IP	IP54 certified
----	----------------

IP54 certified

IP54 certified

DROP	1.5m(set only)
------	----------------

1.5m(set only)

1.5m(set only)

LCD	-
-----	---

-

-

DIMENSION

DIMENSION	W x D x H (mm)
	W x D x H (inch)

107.5×145×56
4.23×5.70×2.20

107.5×145×56
4.23×5.70×2.20

WEIGHT	422g (With Battery)
--------	---------------------

422g (With Battery)

390g (With Battery)

ETC

OPTION	Battery Cradle (P20), 4 Bay Cradle
--------	------------------------------------

Battery Cradle (P20), 4 Bay Cradle

Battery Cradle (P20), 4 Bay Cradle

3-Inch Printer



LK-P300

4-Inch Printer



LK-P41

PRINTING SPEC

PRINTING	METHOD
	SPEED
	WIDTH
	RESOLUTION
EMULATION	

Direct thermal
127mm/sec * 20 mm wide paper applies 4 ips
72mm, 576 Dots/line
203 DPI
ESC/POS, CPCL, ZPL Command compatible

Direct thermal
80mm/sec
104mm, 832 Dots/line
203 DPI
ESC/POS, CPCL, ZPL Command compatible

PAPER SPEC

PAPER	TYPE
	WIDTH
	THICKNESS
	ROLL DIAMETER
	ROLL CORE INNER DIAMETER

Thermal Receipt/Label/Linerless(Max. X2)
20 ~ 80mm
0.06~0.16mm
Max. Ø 66.5mm
12.5mm ± 0.5mm

Thermal Receipt/Label
50 ~ 112mm
0.06~0.16mm
Max. Ø 56mm
12.5mm ± 0.5mm

INTERFACE

INTERFACE	STANDARD
	OPTION

USB C Type, NFC Tag, Wi-Fi(802.11a/b/g/n/ac) + Bluetooth Smart Ready (Bluetooth4.2+BLE) Combo
-

Serial(RS-232C), USB, NFC Tag
Wi-Fi(802.11a/b/g/n), Bluetooth Smart Ready(Bluetooth5.2+BLE)

HARDWARE SPEC

MEMORY	FLASH(MAX.)
	RAM

8GB or 16GB or 32GB
DDR3 256MB

8MB (Max 64MB)
SDRAM 16MB (Max 64MB)

BATTERY CHARGER

AC/DC Adapter 5V / 2A

AC/DC Charger 8.4V / 1A

BATTERY

7.2V 2500mAh, 5000mAh 3/6 Hrs Charging time (2500/5000 mAh) 20/39 Hrs Stand-by (2500/5000 mAh)
--

7.2V 3350mAh, 6700mAh 4.0/7.5 Hrs Charging time (3350/6700 mAh) 180Hrs Stand-by (6700mAh)

SENSOR	STANDARD
--------	----------

Paper end, Gap, Black mark, Cover open
--

Paper end, Gap, Black mark, Cover open
--

RELIABILITY	TPH LIFE
-------------	----------

50km

50km

TEMPERATURE	OPERATING TEMPERATURE
	STORAGE TEMPERATURE

-20 ~ 55°C (20 mm wide paper : -5 ~ 55°C)
-30 ~ 65°C

-10 ~ 50°C
-20 ~ 60°C

HUMIDITY	OPERATING HUMIDITY
	STORAGE HUMIDITY

10 ~ 90%
10 ~ 90%

35 ~ 80%
10 ~ 90%

IP

IP54 certified

IP54(with case) certified

DROP

2.1m(set only)

1.2m(set only), 1.8(with case)

LCD

TFT 27.7 *27.7mm

-

DIMENSION

DIMENSION	W x D x H (mm)
	W x D x H (inch)

117.6×157.5×80
4.6×6.1×3.1

149×162×70
5.87×6.37×2.75

WEIGHT

725g (with 2500mAh battery)

610g (with 3350mAh battery)

ETC

OPTION

5000mA battery, Set Cradle(Non-development), RTC, Battery Cradle (P30), 4 Bay Cradle
--

Battery Cradle (P41)

4-Inch Printer



LK-P43II

PRINTING SPEC

PRINTING	METHOD
	SPEED
	WIDTH
	RESOLUTION

Direct thermal
100mm/sec
104mm, 832 Dots/line
203 DPI

EMULATION

ESC/POS, CPCL, ZPL Command compatible

PAPER SPEC

PAPER	TYPE
	WIDTH
	THICKNESS
	ROLL DIAMETER
	ROLL CORE INNER DIAMETER

Thermal Receipt/Label
50 ~ 112mm
0.06~0.16mm
Max. Ø 56mm
12.5mm ± 0.5mm

INTERFACE

INTERFACE	STANDARD
	OPTION

Serial(RS-232C), USB
Wi-Fi(802.11a/b/g/n), Bluetooth Smart Ready(Bluetooth5.2+BLE)

HARDWARE SPEC

MEMORY	FLASH(MAX.)
	RAM

16MB(Max.32MB)
SDRAM 16MB(Max.32MB)

BATTERY CHARGER

AC/DC Adapter 9V / 4A

BATTERY

7.2V 3350mAh, 6700mAh 3.5/6.5 Hrs Charging time (3350/6700 mAh) 118Hrs Stand-by(6700mAh)
--

SENSOR	STANDARD
--------	----------

Paper end, Gap, Black mark, Cover open, Peeler detect, Peeler S/W
--

RELIABILITY	TPH LIFE
-------------	----------

50km

TEMPERATURE	OPERATING TEMPERATURE
	STORAGE TEMPERATURE

-21 ~ 55°C
-30 ~ 65°C

HUMIDITY	OPERATING HUMIDITY
	STORAGE HUMIDITY

10 ~ 90%
10 ~ 90%

IP	IP54 certified
----	----------------

IP54 certified

DROP	1.8m(set only)
------	----------------

1.8m(set only)

LCD	WQVGA Color graphic 3" TFT LCD
-----	--------------------------------

WQVGA Color graphic 3" TFT LCD

DIMENSION

DIMENSION	W x D x H (mm)
	W x D x H (inch)

166×174×80
6.5×6.8×3.1

WEIGHT	1kg (with 2600mAh battery)
--------	----------------------------

1kg (with 2600mAh battery)

ETC

OPTION	Peeler, RTC Battery Cradle (P43)
--------	-------------------------------------

Peeler, RTC Battery Cradle (P43)



LK-P400

Direct thermal
127mm/sec
104mm, 832 Dots/line
203 DPI

ESC/POS, CPCL, ZPL Command compatible

Thermal Receipt/Label/Linerless(Max. X2)
50 ~ 112mm
0.06~0.16mm
Max. Ø 57.5mm
12.5mm ± 0.5mm

USB, NFC Tag, Wi-Fi(802.11a/b/g/n/ac) + Bluetooth Smart Ready (Bluetooth4.2+BLE) Combo

-

8GB or 16GB or 32GB
DDR3 256MB

AC/DC Charger 8.4V / 1A

7.2V 2500mAh, 5000mAh 3.5/5.5 Hrs Charging time(2500/5000 mAh) 20/39 Hrs Stand-by(2500/5000 mAh)
--

SENSOR	STANDARD
--------	----------

Paper end, Gap, Black mark, Cover open
--

RELIABILITY	TPH LIFE
-------------	----------

50km

OPERATING TEMPERATURE	-20 ~ 55°C
STORAGE TEMPERATURE	-30 ~ 65°C

OPERATING HUMIDITY	10 ~ 90%
STORAGE HUMIDITY	10 ~ 90%

IP	IP54 certified
----	----------------

IP54 certified

DROP	2m(set only)
------	--------------

2m(set only)

LCD	TFT 27.7 *27.7mm
-----	------------------

TFT 27.7 *27.7mm

DIMENSION	155×157×67
-----------	------------

DIMENSION	6.1×6.1×2.6
-----------	-------------

WEIGHT	840g (with 2500mAh battery)
--------	-----------------------------

840g (with 2500mAh battery)

OPTION	5000mA battery, RTC, Battery Cradle (P30) 4 Bay Cradle
--------	---

5000mA battery, RTC, Battery Cradle (P30) 4 Bay Cradle

Accessories

Charger



Charger



Car charger



SMPS

Charging Cradle



7.4V
2600mAh
LK-P12II
LK-P30II



7.4V
2500mAh
LK-P300
LK-P400



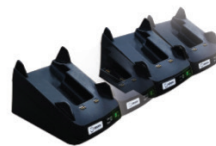
7.4V
2000mAh
LK-P34
LK-P20II



7.4V
2600mAh
LK-P41
LK-P43II



7.4V
1450mAh
LK-P22
LK-P24



Printer Set Cradle
(LK-P22/LK-P24)



4-bay
Battery Cradle
(P12II/P20II/P30II
P300/P400)

Interface Cable



Serial Cable



USB
A-mini Type



USB
C Type

Leather Case



LK-P20II



LK-P25II
(IP54 Case)



LK-P25II



LK-P30II



LK-P41

Leather Case

LK-P20, LK-P22, LK-P22 MI,
LK-P22aNFC, LK-P25IP,
LK-P24, LK-P30, LK-P31,
LK-P34, LK-P41

Leather Case_IP54

LK-P20, LK-P22, LK-P24,
LK-P30, LK-P41

Strap



Shoulder Strap
Strap is available in all model.



Belt Strap / Clip

Label Printer

SEWOO label printers are cost-effective, reliable, and adaptable.

The LK-B Series delivers consistent performance with easy maintenance, offering a user-friendly and cost-efficient solution for barcode printing and tagging applications. Designed for a wide range of business environments, it supports warehouse management, postal services, healthcare, manufacturing, and retail.

Application

Label



Delivery



Laboratory



Hospital



Warehouse

RFID Tag



Tracking



Personal Management



Inventory



Airport

External Paper Loading



LK-B425

Direct Thermal Printer



LK-B30IIE



LK-B30II

Thermal Transfer Printer



LK-B24

External Paper Loading



LK-B425

Direct Thermal Printer



LK-B30IIE

PRINTING SPEC

PRINTING	METHOD
	SPEED
	WIDTH
	LENGTH
	RESOLUTION
FONT SPECIFICATION	EPL II
	ZPL II
EMULATION	

Direct thermal
152mm/sec
104mm (4.1")
1,000mm (39.3")
203 DPI (8 dots/mm)
6 bitmapped 8x12, 10x16, 12x20, 14x24, 32x48, 24x24(KSC5601)
9 bitmapped 5x9, 7x11, 10x18, 10x18, 15x28, 13x26, 40x60, 13x21, 24x24 2 smooth scalable(English, Korean)
EPL II, ZPL II Command compatible

Direct thermal
152mm/sec
108mm (4.25")
1,000mm (39.3")
203 DPI (8 dots/mm)
6 bitmapped 8x12, 10x16, 12x20, 14x24, 32x48, 24x24(KSC5601)
9 bitmapped 5x9, 7x11, 10x18, 10x18, 15x28, 13x26, 40x60, 13x21, 24x24 2 smooth scalable(English, Korean)
EPL II, ZPL II Command compatible

MEDIA SPEC

MEDIA	TYPE
	WIDTH
	THICKNESS
	ROLL DIAMETER
	INNER CORE

Roll, Fanfold, Blackmark, Continuous, Gap, Notch Sensor
25 ~ 114mm
0.065 ~ 0.20mm
Up to 127mm (5")
25.4mm (1") or 38.1mm (1.5")

Roll, Fanfold, Blackmark, Continuous, Gap, punched hole, Notch Sensor
25.4~115mm
0.060 ~ 0.20mm
Up to 127mm (5")
25.4mm (1")

INTERFACE

INTERFACE	STANDARD
	OPTION

USB, Serial(RS-232C), Ethernet
Wi-Fi(802.11a/b/g/n), Bluetooth Smart Ready (Bluetooth5.2+BLE)

USB, Serial(RS-232C), Ethernet
Wi-Fi(802.11a/b/g/n), Bluetooth Smart Ready (Bluetooth5.2+BLE)

HARDWARE SPEC

MEMORY	STANDARD
SERIAL BAUD RATE	
SENSOR	STANDARD
AUTO CUTTER	TYPE
	LIFE

Main Flash 1MB/ SDRAM 16MB/ FONT Flash 8MB
Max.115,200 bps
Gap, Black mark, Cover open
Guillotine
200,000 cuts, Max 20 cycle/1 min

Main Flash 1MB/ SDRAM 16MB/ FONT Flash 8MB
Max.115,200 bps
Gap, Black mark, Cover open
Guillotine
500,000 cuts, Max 20 cycle/1 min(0.06mm Paper)

DIMENSION

DIMENSION	W x D x H (mm)
	W x D x H (inch)
WEIGHT	

182 x 120 x 123
7.16 x 4.72 x 4.48
1.5kg

190 x 262 x 168
7.48 x 10.31 x 6.61
1.52kg

ETC

OPTION

Auto Cutter, External Paper Supply

Auto cutter, Peeler

Direct Thermal Printer

Thermal Transfer Printer



LK-B30II



LK-B24

PRINTING SPEC

PRINTING	METHOD	Direct thermal	Thermal transfer and Direct thermal
	SPEED	152mm/sec	127mm/sec
	WIDTH	104mm (4.1")	104mm (4.1")
	LENGTH	1,000mm (39.3")	1,000mm (39.3")
	RESOLUTION	203 DPI (8 dots/mm)	203 DPI (8 dots/mm)
FONT SPECIFICATION	EPL II	6 bitmapped 8x12, 10x16, 12x20, 14x24, 32x48, 24x24(KSC5601)	6 bitmapped 8x12, 10x16, 12x20, 14x24, 32x48, 24x24(KSC5601)
	ZPL II	9 bitmapped 5x9, 7x11, 10x18, 10x18, 15x28, 13x26, 40x60, 13x21, 24x24 2 smooth scalable(English, Korean)	9 bitmapped 5x9, 7x11, 10x18, 10x18, 15x28, 13x26, 40x60, 13x21, 24x24 2 smooth scalable(English, Korean)
EMULATION		EPL II, ZPL II Command compatible	EPL II, ZPL II Command compatible

MEDIA SPEC

MEDIA	TYPE	Roll, Fanfold, Blackmark, Continuous, Gap, Notch Sensor	Roll, Fanfold, Blackmark, Continuous, Gap, Notch Sensor
	WIDTH	22 ~ 114mm	25 ~ 114mm
	THICKNESS	0.065 ~ 0.20mm	0.065 ~ 0.20mm
	ROLL DIAMETER	Up to 127mm (5")	Up to 127mm (5")
	INNER CORE	25.4mm (1") or 38.1mm (1.5")	25.4mm (1") or 38.1mm (1.5")
RIBBON	WIDTH	-	110mm (4.3")
	LENGTH	-	75M, Ø 35mm (1.3")
	TYPE	-	Wax, Wax/Resin, Resin

INTERFACE

INTERFACE	STANDARD	USB, Serial(RS-232C), Ethernet	USB, Serial(RS-232C), Ethernet
	OPTION	Wi-Fi(802.11a/b/g/n), Bluetooth Smart Ready (Bluetooth5.2+BLE)	-

HARDWARE SPEC

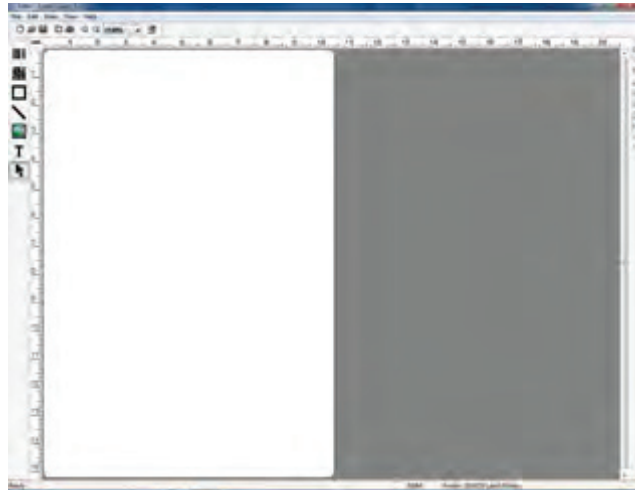
MEMORY	STANDARD	Main Flash 1MB/ SDRAM 16MB/ FONT Flash 8MB	Main Flash 1MB, SDRAM 16MB, FONT Flash 8MB
	SERIAL BAUD RATE	Max.115,200 bps	Max.115,200 bps
	SENSOR <td>Gap, Black mark, Cover open</td> <td>Gap, Black mark, Cover open, Ribbon encoder</td>	Gap, Black mark, Cover open	Gap, Black mark, Cover open, Ribbon encoder

DIMENSION

DIMENSION	W x D x H (mm)	190 x 254 x 169	216.2 x 250.5 x 160.65
	W x D x H (inch)	7.48 x 10.0 x 4.29	8.5 x 9.8 x 6.3
	WEIGHT	2kg	1.9kg

ETC

OPTION	External Paper Supply	External Paper Supply
--------	-----------------------	-----------------------



Windows®- based



Label Cooker

Label Cooker is for basic barcode label and tag design solution that can easily design edit and print labels, tags, and receipts.

It supports 30 different types of 1D barcode and 10 different types of 2D barcode to suit various barcode and data printing needs.

Benefit

- The menus allow for simple use of frequently used functions
- Easy to set up, an intuitive edit method reduces training time for trainees
- A wide range of more than 50 barcode choices suitable for users to input various data
- Supports more than 19 graphic formats including JPG, BMP, PNG that enable the input of various images and design labels

Labeling Sample

You can design your own labels through SEWOO's Label Cooker and print a variety of labels as shown below.



You can download our Label Cooker on our website without any charges.

Accessories

External Paper Supply



LK-B20II / LK-B230II



LK-B425



TERMINAL

A versatile terminal solution for real-time data-driven operations

Handheld terminals and tablets support real-time data capture and on-site operations across business workflows. Designed for mobility and performance, they enable efficient data processing in diverse business environments.

Handheld Terminal

SEWOO Handheld Terminal ensures efficient data management.



NBP-75



NBP-65

Tablet

SEWOO Tablets enable real-time operations and high-performance use.



Enterprise Tablet



Industrial Tablet

Handheld Terminal

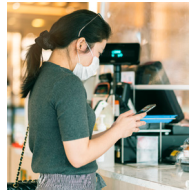
SEWOO Handheld Terminal ensures efficient data management.

SEWOO Handheld Terminal is a powerful, portable device designed to optimize data management and streamline workflows. It offers real-time processing capabilities, making it ideal for fast-paced environments. With its intuitive design and robust features, it enhances accuracy and efficiency in daily operations.

Application



Delivery



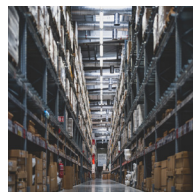
Retail



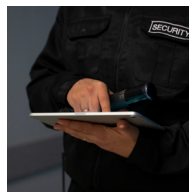
Transportation



Manufacturing



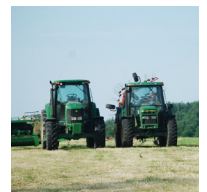
Logistics



Security



Public Services



Agriculture

Key Feature



NBP-75

- High-performance octa-core 2.2 Ghz processor
- Powerful GPU support and 45° tilt design for efficient scanning & decoding capability
- Support for Wi-Fi 6
- Designed for rugged protection
- Large battery capacity : 5,000mAh



NBP-65

- Rugged and light weight
- Powerful & efficient Data collection
- Fast transmission with 4G network
- GMS(only GMS global certified) PASSED
- IP65 protection grand and 1.5m drop rate & 5G Wi-Fi
- Supports 3types wireless LAN (North America, Europe, Asia)
- Provides 4G networks and dual band Wi-Fi 2.4G+5G (Wi-Fi 802.11 a/b/g/n/r/ac)

Handheld Terminal



NBP-75

PRODUCT SPEC

SYSTEM CONFIGURATION	PROCESSOR	Octa-core 2.2 Ghz high-performance processor
	OPERATING SYSTEM	Android 13.0 (AER) Android 15.0 (Upgradeable)
	MEMORY (ROM+RAM)	64GB + 4GB (Standard), 128GB+6/8/12GB (Optional)
	SIM	Two out of three SIM card slots, support dual-SIM dual-standby * Two out of three SIM card slots: two cards can be held at the same time, Nano SIM card + Nano SIM card / Nano SIM card + TF card
	DISPLAY SCREEN	5.5-inch, resolution: 1440*720 pixels IPS HD screen
	KEYPAD	5 keypads in total: scan key *2, power key *1, volume key *2
	BATTERY	4.4V lithium battery, with 5000mAh (Optional: Smart battery), detachable, back-up battery support
	CHARGING METHOD	Type-C charging, support 9V/2A fast charging
	SCANNING ENGINE	DS7000 Pro (Optional : DS7500/HS7/N5703/ N6703/N6803)

ENVIRONMENTAL PARAMETER	WORKING TEMPERATURE	-20°C - 50°C *Do not charge under low temperature conditions for the safety concerns
	HUMIDITY	0 - 95% (no moisture condensation)
COMMUNICATION TRANSMISSION	DROP SPECIFICATION	Multiple drops to concrete floor from the height of 1.5m
	WWAN (NETWORK FREQUENCY)	2G : B2/B3/B5/B8 3G : WCDMA:B1/B2/B4/B5/B8 4G : FDD-LTE:B1/B2/B3/B4/B5/B7/B8/B12/B17/B20/B28A/B28B/B66/ TDD-LTE:B34/B38/B39/B40/B41(190M)
COMMUNICATION INTERFACE	WWAN (DATA SERVICE)	GSM/GPRS/EDGE/CDMA/UMTS/HSPA/HSPA+/EVDO/WCDMA/TDD-LTE/FDD-LTE
	BLUETOOTH GPS	Bluetooth 5.1, support BLE GPS/GIONASS/BDS/AGPS/Galileo/QZSS
ACCESSORIES	USB INTERFACE OTG INTERFACE	Type-C (with headset function) *1 Support
	STANDARD ACCESSORIES	USB cable*1, hand strap*1, power adapter*1, device-back strap*1, battery*1

Optional Accessories

Chargin Cradle



Single Charging Cradle



2-in-1 Charging Cradle



4-slot Battery Charging Cradle



Multi-functional 5-slot Base

Peripheral



Protective Cover



Protective Film



Waist Bag



Stylus Pen



Pistol Grip (Only for Straight type Scanner)

Handheld Terminal



NBP-65

PRODUCT SPEC

SYSTEM CONFIGURATION	CPU	Octa-core 2.0 GHz
	OPERATING SYSTEM	Android 9.0
	MEMORY	Standard : 4GB RAM+64GB ROM Option : 2GB RAM+16GB ROM, 3GB RAM+32GB ROM
	DISPLAY	4.7inch, 1280 x 720 High resolution
	KEYPAD	4 Front keys, 4 Side keys, Power key
	EXIT WINDOW	Corning® Gorilla® glass
	BATTERY	3.8V 4000mAh rechargeable (optional : 8000mAh) lithium polymer battery Fast Charging scheme
	GMS	PASSED (ONLY GMS GLOBAL CERTIFIED)
	NFC (OPTIONAL)	13.56 MHz / Within 30mm / ISO14443A / 14443B / 15693
	Structural Parameters	DIMENSION (WxDxH)
WEIGHT		0.5lb (230g, With battery)
Operating Environment	OPERATING TEMP	-4°F ~ 140°F (-20°C ~ 60°C)
	HUMIDITY	0~95% (Non-condensing)
	DROP RATING	4.9ft.(1.5m) to concrete
	IP RATING	IP65

COMMUNICATION TRANSMISSION

WWAN (NETWORK FREQUENCY)

ASIA & EUROPE:
- 2G : B2/B3/B5/B8
- 3G : WCDMA : B1/B2/B5/B8
- CDMA&EVDO : BC0 /
- TD-SCDMA : B34/B39
- 4G : FDD-LTE : B1/B3/B7/B8/B20
TDD-LTE : B38/B39/B40/B41/B34

AMERICA:
- 2G : B2/B3/B5 /
- 3G : B1/B2/B4/B5;
CDMA&EVDO : BC0/BC1 (U.S.A)
- 4G : B1/B2/B3/B4/B5/B7/
B12/B17/B28A/B28B/B41

WWAN (DATA SERVICE)

- GSM/GPRS/EDGE/CDMA/UMTS/
HSPA/HSPA+/EVDO/WCDMA/TD-
SCDMA/TDD-LTE/FDD-LTE
- Wi-Fi 802.11 a/b/g/n/r/ac
(Dual-band Wi-Fi:2.4G+5G),
Double PA amplifier

WIRELESS LAN

Wi-Fi 802.11 a/b/g/n/r/ac
(Dual-band Wi-Fi:2.4G+5G),
Double PA amplifier

BLUETOOTH

Bluetooth 5.0

GPS

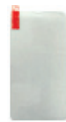
GPS/AGPS/Beidou Compass/
Galileo/Glonass

ACCESSORIES STANDARD

Battery, Power adapter,
Hand strap, Bottom charging
cable, Power Adapter (5V, 2A)

Optional Accessories

Peripheral



Screen Protector



USB Cable



Wrist Strap



12V Single Cradle
(Device and Battery)



Protective Case
(with Wrist Strap)



Pistol Grip



4-slot Battery Charger



Waist Bag



Extended Battery
(4000mAh)

SEWOO Industrial Tablet is a rugged, high-performance device.

Industrial Tablet is built for durability and high performance in harsh environments. It is designed to withstand extreme conditions, including dust, water, and temperature variations. Equipped with powerful hardware, it ensures fast and reliable data processing.

With its rugged construction, the tablet is ideal for industries like manufacturing, logistics, and field services. It supports real-time data collection, communication, and task management. The Industrial Tablet is the perfect tool for professionals working in demanding environments.

Industrial Tablet



BPR-08A
MT8788



BPR-08W

PRODUCT SPEC

PHYSICAL CHARACTERISTICS		CPU	MT8788, 8core ARM® / Cortex-A73 MPCore™ up to 2.0GHz	Intel N5100	Intel i5-8200Y
	RAM/ROM		EMCP : 4GB+64GB (Optional : 6GB+128GB)	4GB+64GB/ 8GB+256GB (optional)	8GB+256GB/ 16GB+512GB (optional)
	WIFI		802.11a/b/g/n/ac, Wireless AP (Mobile AP) 2.4G, 5G	802.11a/b/g/n/ac Wireless Internet Wireless AP (Mobile AP) 2.4G, 5G	
	OS		Android 11	Windows 10	
	GPS		Support Beidou+GPS+ glonass Capture sensitivity : -163 dBm	BDS, GPS, GLONASS	
	WWAN		TDD-LTE : B34/B38/B39/B40/B41/B66 FDD-LTE : B1/B2/B3/B4/B5/B7/B8/B12/B17/B20/B28 WCDMA : B1/B2/B4/B5/B8 CDMA2000 : BC0 TD-SCDMA : B34/B39 GSM : B2/B3/B5/B8	Default : SLM770A-SA : (Global band) LTE FDD:B1/2/3/4/5/7/8/28/66 LTE TDD:B40 WCDMA:B1/2/4/5/8 GSM:850/900/1800/1900 Optional : SLM750-VA (only North America) LTE-FDD:B2/4/5/12/13/17/25/26 LTE-TDD:B41, WCDMA:B2/4/5, GSM:850/1900	
	NFC		ISO/EC14443, ISO/IEC15693, MIFARE, Felica, Read distance : 3-5cm, Front	ISO14443; TYPE A; Mifare 13.56 MHz, Distance: 7-15mm	
	SENSOR		1. Light Sensor 2. Proximity Sensor 3. Geomagnetism 4. Gyroscope 5. Accelerometer 6. Baroceptorr	1. Light sensor 2. Compass 3. Baroceptorr	
	PRODUCT SIZE / WEIGHT		228*137*13.3mm / 570g	234*144*16.8mm / 700g	
	POWER AND BATTERY		7800mAh/3.8V	5000mAh; 7.7V	
	BATTERY TYPE		Built in unremovable Li-ion Polymer Battery	-	
	PROOF DEGREE		1. Waterproof IP65, but in fact is IP67 design 2. Drop 1.2m, 6 sides	1. Anti-dust & Waterproof IP65-IP67 2. Dropping Resistance 1.2 meter	
	CAMERA		Front Camera 5.0M + Rear Camera 13.0M (Support flash LED)		
	BLUETOOTH			BT 4.2	
OPTIONAL	FINGER PRINT			Support	
	SCANNER			Support	
	UHF RFID			Support	
	ACCESSORIES		Extra Hand-string(carry strap), Docking station, Car holder (compatible 10inch), Car charger DC3.5, Stylus pen, 5V3A EU/US charger	Extra Hand-string(carry strap), Docking station, Car holder (compatible 10inch), Car charger DC4, Stylus pen, 12V4A adapter	



BPR-10IIA

PRODUCT SPEC

PHYSICAL CHARACTERISTICS

	MT6789	MT6877
CPU	MTK MT6789 Octa Core 2.2GHz	MT6877 Octa Core 2.4GHz
OS	Android 13.0 / Support GMS	Android 15.0 / Support GMS
RAM/ROM	8GB/256GB (optional : 12GB/256GB)	8GB/256GB 16GB/512GB Optional
GPS	BDS, GPS, GLONASS	BDS, GPS, GLONASS
POWER AND BATTERY	12000mAh 3.8V	Main : 12000mAh 3.8Vdc Secondary : 2400mAh DC 5V 3A
CERTIFICATION	MIL-STD-810G	-
CAMERA	Front: 5MP / Rear: 13MP Rear camera with Flash light	Front: 8MP / Rear: 16MP Rear camera with Flash light
SENSOR	1. Light sensor / 2. Compass / 3. Gravity / 4. Acceleration / 5. Baroceptor	1. Light Sensor / 2. Geomagnetic Sensor / 3. Barometric Sensor / 4. G-Sensor / 5. Acceleration Sensor / 6. Gyroscope / 7. Distance Sensor / 8. Vibrate (motor)
TEMPERATURE	Storage : -40 °C to 60 °C, Operation : -20 °C to 55 °C	
SIZE / WEIGHT	273*172*20mm / 1.1kg	
PROOF DEGREE	Anti-dust & Waterproof IP65 / Dropping Resistance 1.2 meter	
WWAN	4G LTE, 3G WCDMA, GSM 4G Fre : TDD-LTE: B34/B38/B39/B40/B41 FDD-LTE : B1/B2/B3/B5/B7/B8/B12/B17/B20/ B26/B28A WCDMA : B1 : 2100MHZ, B2 : 1900MHZ, B5 : 850MHZ, B8 : 900MHZ, CDMA2000 : BC0, TD-SCDMA: B34/B39, GSM : B2/B3/B5/B8	5G : N1/N5/N8/N28AB/N78/N41 FDD_LTE: B1/B2/B3/B4/B5/B7/B8/B12/B17/ B20/B28 TDD_LTE: B34/B38/B39/B40/B41/B66 WCDMA: 850/900/1900/2100 CDMA2000: BC0 TD-SCDMA: B34/B39 GSM: 850/900/1800/1900
INTERFACE	NFC	13.56 MHz, Distance: 7-15mm ISO14443, TYPE A, Mifare
	WIFI	802.11a/b/g/n/ac Wireless Internet Wireless AP (Mobile AP) 2.4G, 5G / AP6255
	BLUETOOTH	5.0 Version
OPTIONAL	FINGER PRINT	Support
	SCANNER	Support
	UHF RFID	Support
ACCESSORIES	Extra Hand-strap (wrist strap), Extra Hand-string (carry strap), Docking station, Extra battery 12000mAh, Car holder (compatible 8inch), Car docking 12V In 5V out (include 12V/3A Car charger), Car charger, Stylus pen, 5V3A EU/US charger, Keyboard (compatible android&windows)	



BPR-10IIA

PRODUCT SPEC

		MT8788	RK3399
PHYSICAL CHARACTERISTICS	CPU	MTK MT8788 8core ARM® Cortex-A73 MPCoreTM up to 2.0GHz	RK3399 6 Core 1.8GHz, A72
	OS	Android 11.0	Android 10
	RAM/ROM	4GB / 64GB 6GB /128GB; 8GB / 256GB Optional	4GB+64GB
	GPS	BDS, GPS, GLONASS	Baidou, GPS, GLONASS
	POWER AND BATTERY	12000mAh 3.8V, Lithium Ion Battery Duration : 14 hours / Standby time : 9 days Video playback time is: about 15H (70% volume, 70% lumen brightness, 1080 HD video playback)	12000mAh 3.8V, Lithium Ion Battery Duration: 19 hours / Standby time: 15 days 3.5*1.35mm, 5V 3A DC in put /Magnetic charger
	CERTIFICATION	MIL-STD-810G / ISO / IP65 / MSDS	-
	TEMPERATURE	Storage : -40 °C to 60 °C, Operation : -20 °C to 55 °C	
	CAMERA	Front: 5MP / Rear: 13MP / Rear camera with Flash light	
	SENSOR	1. Light sensor / 2. Compass / 3. Gravity / 4. Acceleration / 5. Baroceptor	
	SIZE / WEIGHT	273*172*20mm / 1.1kg	
PROOF DEGREE	Anti-dust & Waterproof IP65 / Dropping Resistance 1.2 meter		
WWAN	4G LTE, 3G WCDMA, GSM 4G Fre : TDD-LTE: B34/B38/B39/B40/B41/B66 FDD-LTE : B1/B2/B3/B4/B5/B7/B8/B12/B17/ B20/B28 WCDMA: B1 : 2100MHZ, B2: 1900MHZ, B5: 850MHZ, B8 : 900MHZ, CDMA2000: BC0, TD-SCDMA: B34/B39 GSM: B2/B3/B5/B8	4G LTE, 3G WCDMA, GSM 4G Fre: FDD: B1, B2, B3, B5, B7, B8, B12, B20 TDD: B38, B39, B40, B41, B34 WCDMA: B1, B8 TD-SCDMA: B34, B39 GSM / GPRS / EDGE	
INTERFACE	NFC	13.56 MHz, Distance: 7-15mm ISO14443, TYPE A, Mifare	13.56 MHz, Distance 5cm or above
	WIFI	802.11a/b/g/n/ac, Wireless AP (Mobile AP)2.4G, 5G AP6255	802.11a/b/g/n/ac Wireless internet Wireless AP (Mobile AP) 2.4G, 5G
	BLUETOOTH	4.2 Version	4.0 Version
OPTIONAL	FINGER PRINT	Support	
	SCANNER	Support	
	UHF RFID	Support	
ACCESSORIES	Extra Hand-strap (wrist strap), Extra Hand-string (carry strap), Docking station, Extra battery 12000mAh, Car holder (compatible 8inch), Car docking 12V In 5V out (include 12V/3A Car charger), Car charger, Stylus pen, 5V3A EU/US charger, Keyboard (compatible android&windows)		



BPR-10I1W

PRODUCT SPEC

		N5100	I5-8200Y
PHYSICAL CHARACTERISTICS	CPU	Intel N5100 Quad Core, 1.1GHz	Intel i5-8200Y (optional : i7-8500Y)
	OS	Windows 10 Home/Pro/lot	windows 10 pro
	RAM/ROM	8GB/256GB (optional : 4GB/64GB)	8GB/256GB (optional : 8/512GB, 16/512GB)
	GPS	BDS, GPS, GLONASS	Support Beidou+GPS+GLONASS Capture sensitivity : -163 dBm Cold start : 35seconds Hot start : 1seconds
	POWER AND BATTERY	6000mAh, 7.6V Play video duration : 8hours Screen standby duration : 4days	6000mAh , 7.6V Play video duration : 8H Screen standby duration : 9H
	CERTIFICATION	MIL-STD-810G	MIL-STD-810G
	TEMPERATURE	Storate Temperature: -25 °C to 80 °C / Operation Temperature: -20 °C to 60 °C	Storate Temperature: -25 °C to 80 °C / Operation Temperature: -20 °C to 60 °C
	CAMERA	Front: 5MP, Rear: 13MP	Front Camera 5.0M+ Rear Camera 13M.0M
	SENSOR	1. Light sensor, 2. Compass, 3. Baroceptor	1. Light sensor, 2. Gravity sensor
	SIZE / WEIGHT	273*172*20mm / 1100g	275*178*18mm / 1100g
PROOF DEGREE	Anti-dust & Waterproof IP67 Dropping Resistance 1.2 meter	1. Waterproof IP54 2. Drop 1.2m, 6 sides	
WWAN	Default :SLM770A-SA : (Global band) LTE FDD:B1/2/3/4/5/7/8/28/66 LTE TDD:B40 WCDMA:B1/2/4/5/8 GSM:850/900/1800/1900 Optional : SLM750-VA (only North America) LTE-FDD:B2/4/5/12/13/17/25/26 LTE-TDD:B41 WCDMA:B2/4/5 GSM:850/1900		
INTERFACE	NFC	13.56 MHz, Distance: 7-15mm, ISO14443, TYPE A, Mifare	13.56 MHz, Distance: 7-15mm, ISO14443 TYPE A
	WIFI	802.11a/b/g/n/ac Wireless Internet Wireless AP (Mobile AP)2.4G, 5G, Intel Stone Peak 3165	802.11a/b/g/n/ac, Wireless AP (Mobile AP)2.4G, 5G
	BLUETOOTH	4.2 version	BT4.2
OPTIONAL	FINGER PRINT	Support	
	SCANNER	Support	
	UHF RFID	Support	
	ACCESSORIES	Extra Hand-strap (wrist strap), Extra Hand-string (carry strap), Docking station, Extra battery 12000mAh, Car holder (compatible 8inch), Car docking 12V In 5V out (include 12V/3A Car charger), Car charger, Stylus pen, 5V3A EU/US charger, Keyboard (compatible android&windows)	



BPR-101IW

PRODUCT SPEC

		Z8350	I5-1235U/I7-1255U
PHYSICAL CHARACTERISTICS	CPU	Intel cherry trail Z8350, 1.44Ghz-1.92GHz	Intel i5-1235U (optional : i7-1255U)
	OS	windows 10 pro	windows 11 pro
	RAM/ROM	4GB/64GB	8GB/256GB (optional : 8/512GB, 16/512GB)
	GPS	Support Beidou+GPS+GLONASS / Capture sensitivity : -163 dBm / Cold start : 35seconds / Hot start : 1seconds	Support Beidou+GPS+GLONASS Capture sensitivity : -163 dBm Cold start : 35seconds Hot start : 1seconds
	POWER AND BATTERY	Main battery : 12000mAh / Voltage 3.8 Vdc (45.6Wh), Secondary battery : 2550mAh Play video duration : 7hours Screen standby duration : 5days	6000mAh , 7.6V Charging time : 2H 30min Usage time : 5H 30min (50% volume, 60% brightnessm playing local 1080P video)
	CERTIFICATION	1. MIL-STD-810G 2. EU CE 3. US FCC	MIL-STD-810G
	TEMPERATURE	Storate Temperature: -25 °C to 80 °C / Operation Temperature: -20 °C to 60 °C	Storate Temperature: -25 °C to 80 °C / Operation Temperature: -20 °C to 55 °C
	CAMERA	Front Camera : 2.0M + Rear Camera : 5M.0M	Front Camera 5MP Rear Camera 8MP
	SENSOR	1. Light sensor, 2.Gravity sensor	1. Light sensor, 2. Acceleration Sensor, 3. G-Sensor
	SIZE / WEIGHT	275*178*18mm / 1040g	273*172*20mm / 1190±50g
PROOF DEGREE	1. Waterproof IP65 2. Drop 1.2m, 6 sides	Anti-dust & Waterproof IP54 Dropping Resistance 1.2 meter	
WWAN	Default :SLM770A-SA : (Global band) LTE FDD:B1/2/3/4/5/7/8/28/66 LTE TDD:B40 WCDMA:B1/2/4/5/8 GSM:850/900/1800/1900 Optional : SLM750-VA (only North America) LTE-FDD:B2/4/5/12/13/17/25/26 LTE-TDD:B41 WCDMA:B2/4/5 GSM:850/1900		
INTERFACE	NFC	ISO/IEC14443, ISO/IEC15693, MIFARE, Felica, Read distance: 3-5cm, Front	13.56 MHz, Distance: 7-15mm, ISO14443 TYPE A
	WIFI	802.11a/b/g/n/ac Wireless AP (Mobile AP)2.4G, 5G	802.11a/b/g/n/ac/ax Wireless Internet Wireless AP (Mobile AP)2.4G, 5G
	BLUETOOTH	BT4.0, Transmission distance : 8 meter	5.2 Version
OPTIONAL	FINGER PRINT SCANNER	Support	Support
	UHF RFID	Support	Support
	ACCESSORIES	Extra Hand-strap (wrist strap), Extra Hand-string (carry strap), Docking station, Extra battery 12000mAh, Car holder (compatible 8inch), Car docking 12V In 5V out (include 12V/3A Car charger), Car charger, Stylus pen, 5V3A EU/US charger, Keyboard (compatible android&windows)	

Accessories

Hand strap



Hand-strap (wrist strap)
* Included as standard



Hand-strap (carry strap)
* Included as standard

Vehicle Accessories



Vehicle mount
(car holder)



BPR-10IIA
Vehicle docking station
(including car charger)



BPR-10IIW
Vehicle docking station
(including car charger)



Car charger
(DC 12V/4A)

Charging



Docking station



AC adapter
(12V/4A, Including power plug)

Peripheral



Battery (6,000mAh)
* Included as standard



Keyboard
(Compatible with
Android, Windows)



Stylus Pen

SEWOO Enterprise Tablet enables real-time operations.

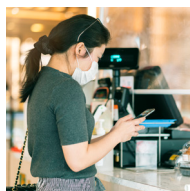
The Enterprise Tablet is a powerful device designed for efficiency and mobility. It supports real-time operations, enhancing productivity across various industries. With a durable build and versatile features, it meets the demands of fieldwork and office environments alike.

From logistics and healthcare to manufacturing and retail, it streamlines processes and improves accuracy. The tablet enables seamless data management, communication, and task execution on the go. Compact yet powerful, it's the ultimate tool for modern businesses.

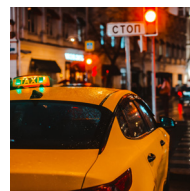
Application



Delivery



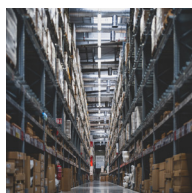
Retail



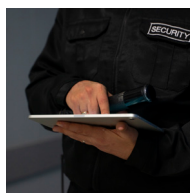
Transportation



Manufacturing



Logistics



Security



Public Services



Agriculture

Enterprise Tablet



ST10



ST11

PRODUCT SPEC

PHYSICAL CHARACTERISTICS	ST10	ST11
SCREEN SIZE	10.1 Inch	11 Inch
DISPLAY RESOLUTION	1280*800	1920*1200 FHD
PROCESSOR	MediaTek MT8788 Octa core	MediaTek G88 Octa Core
RAM	4GB	6GB
STORAGE	64GB	128GB
OS	Android 12	Android 14
CAMERAS	2MP front camera, 5MP rear camera	5MP front camera, 13MP rear camera with flash
NETWORKS	2.4G + 5G Dual Band WiFi (IEEE 802.11b/g/n/ac), GPS & A-GPS, Bluetooth 5.0	2.4G + 5G Dual Band WiFi (IEEE 802.11a/b/g/n/ac), GPS, Bluetooth 5.0 2G/3G/4G LTE 2G: Band 2/3/5/8 3G: Band 1/2/5/8 4G LTE: Band 1/3/5/7/8/20/34/38/39/40/41
PORTS	Type C port x1, 3.5mm headphone jack x1	Type C port x1
EXTENSION	Micro SD slot	Micro SD/SIM slot
BATTERY	6000mAh	7000mAh
SIZE	242mm(L) x 160.1mm(W) x 8.4mm(H)	258mm(L) x 170mm(W) x 10mm(H)
NET WEIGHT	513.8g	500g
PACKAGE	Guide book x1, Warranty card x1, Type C cable x1, Charger x1	Guide book x1, Warranty card x1, Type C cable x1, Charger x1

ST10



- **Powerful Performance:** MediaTek MT8788 8-core processor for high performance and efficient multitasking. 4GB LPDDR4X RAM and 64GB storage (expandable via microSD) for smooth operation and ample storage space.
- **High-Quality Display:** 10.1-inch IPS display with 1280x800 HD resolution for clear, vibrant visuals and wide viewing angles.
- **Premium Design:** Black metal body with smooth edges for a sleek, durable, and stylish appearance.
- **Enhanced Audio:** PureSound Audio system with a K9 digital amplifier chip for superior sound quality.
- **Connectivity and Networking:** 802.11ac dual-band Wi-Fi for fast and stable internet connection. Bluetooth 5.0 for easy pairing with other devices.
- **Long-lasting Battery:** 6000mAh large-capacity lithium battery for extended use and reliability.
- **Convenient Charging:** Type-C port for fast and convenient charging.

ST11



- **Large, High-Quality FHD Display:** 11-inch IPS screen with a 1920x1200 resolution for clear, vibrant visuals.
- **Powerful Performance:** MediaTek G88 Octa-Core Processor (1.8GHz) for smooth multitasking and fast performance. 6GB RAM and 128GB storage (expandable via microSD) for efficient data handling and storage.
- **Advanced Operating System:** Android 14 for the latest features, security updates, and user-friendly experience.
- **Camera System:** 13MP rear camera with flashlight for high-quality photos and videos. 5MP front camera for clear video calls and selfies.
- **Dual Connectivity:** 2.4G + 5G Dual Band WiFi (IEEE 802.11a/b/g/n/ac) for fast, stable internet. 2G/3G/4G LTE support for reliable mobile network access across various bands. Bluetooth 5.0 and GPS for seamless device pairing and navigation.
- **Long Battery Life:** 7000mAh battery for extended use, ensuring all-day productivity.
- **User-Friendly Features:** USB Type-C port for fast charging and data transfer. Physical buttons (3) for easy navigation. Built-in dual speakers and mic for clear audio output and input.
- **Robust and Expandable:** Micro SD/SIM slot for additional storage and SIM card use.



SCANNER

A versatile scanner lineup designed for reliable data capture

Designed for retail, logistics, and service environments, SEWOO scanners deliver fast and accurate 1D and 2D barcode reading. Durable design and seamless system integration ensure stable, efficient operations.

Scanner

SEWOO Scanners deliver fast performance and high-quality imaging.



Wearable Scanner



Wired Scanner



Wireless Scanner

Scanner

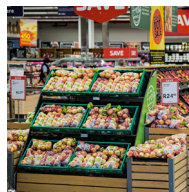
SEWOO Scanners deliver fast performance and high-quality imaging.

SEWOO scanners streamline workflows with reliable performance and enhanced productivity, providing a diverse lineup of wearable, wired, and wireless scanners to fit any work environment.

Application



Store



Supermarkets



Restaurant



Pharmacy

2D Wireless BT



NBS-SL856B

Ring-scanner



NBS-FR85

PRODUCT SPEC

DATA CAPTURE	LIGHT SOURCE	Aiming: 617 nm LED; illumination : 3500K LED	Red LED
	IMAGE SIZE	640 × 480 pixels	640 × 480 pixels
	RESOLUTION	> 2mil	4mil(Code 39, PCS 0.9)
	SCANNING SPEED	60fps	200 times/s
	DEPTH OF SCAN FIELD	Code 39 (20mil) : 20-370mm, Code 39 (5.13mil) : 30-120mm, PDF (6.88mil) : 10-170mm, DM (10mil): 20-170mm, UPC-A 100% (13 mil) : 20-360mm, QR (20 mil) : 0-330m	13mil EAN 13 more than 15cm
	PRINT CONTRAST	25% minimum reflective difference	25% minimum reflective difference
	INDICATOR	Buzzer, LED, Vibration	Beep, LED, Vibration
	SCAN MODE	-	Trig / Common / Continuous / Auto Sensing Mode
	SCAN ANGLE	Pitch ±65° Yaw 360° Roll ±60°	Pitch ±55° Yaw 360° Roll ±55°
	PHYSICAL	INTERFACE	USB, RS232, BT 5.0
WIRELESS TRANSMISSION DISTANCE		200M	Bluetooth :30 meters 2.4G:80 meters
MATERIALS		ABS+PC	ABS+PC
DIMENSION (LxWxH)		180 x 110 x 85 mm	52 x 48 x 32 mm
WEIGHT		433g(Inclu.cable)	42g(with battery)
VOLTAGE		DC 5V ± 0.5V	DC 5V ± 0.5V
BATTERY		2600mAh	500mAh (built-in); Max 14000 scan /full charge
TFT COLOR SCREEN		-	YES
CPU		ARM 32	ARM 32
FLASH MEMORY		600KB	16M
ENVIRONMENTAL	AMBIENT LIGHT	100,000 Lux	0~80000LUX
	WORKING CURRENT	350mA	160mA
	STAND-BY CURRENT	110mA	20uA
	TEMPERATURE (OPERATING)	0°C ~ 50°C	-10°C ~ 50°C
	TEMPERATURE (STORAGE)	-40°C ~ 70°C	-10°C ~ 50°C
	HUMIDITY	0% to 95%	5% to 95%
	DECODING CAPABILITY	Codabar, Code11, Code39, Code32, Interleaved 2 of 5, Industrial 2 of 5, Matrix 2 of 5, Code93, Code128, GS1-128, UPC-A, UPC-E, EAN 8, EAN 13, GS1 DataBar, RSS14, GS1 DataBar Limited, GS1 DataBar Expanded, etc.	Codabar, Code11, Code39, Code32, Interleaved 2 of 5, Industrial 2 of 5, Matrix 2 of 5, Code93, Code128, GS1-128, UPC-A, UPC-E, EAN 8, EAN 13, GS1 DataBar, RSS14, GS1 DataBar Limited, GS1 DataBar Expanded, etc.
	2D	PDF417, Micro PDF417, QR Code, Micro QR, Data Matrix, Aztec Code	PDF417, Micro PDF417, QR Code, Micro QR, Data Matrix, Aztec Code
	DROP	1.5M	1.5M
	IP	-	IP42
ACCESSORY	STANDARD	USB Cable	USB cable (type C)

2D Wired



**NBS-8200II
(w/o Stand)**



**NBS-8250II
(with Stand)**

PRODUCT SPEC

DATA CAPTURE	LIGHT SOURCE	White LED (Lighting) RED aiming light
	IMAGE SIZE	640 × 480 pixels
	RESOLUTION	> 3mil
	SCANNING SPEED	60fps
	DEPTH OF SCAN FIELD	-
	PRINT CONTRAST	60~360mm (13mil PCS90%)
	INDICATOR	-
	SCAN MODE	LED Indicator and Buzzer
	SCAN ANGLE	Manual & Automatic
	PHYSICAL	INTERFACE
WIRELESS TRANSMISSION DISTANCE		-
MATERIALS		USB-HID, USB-VCP, RS232
DIMENSION (LxWxH)		-
WEIGHT		ABS+TPU
VOLTAGE		112.5 × 81.5 × 204 mm
BATTERY		185g
TFT COLOR SCREEN		DC 3.6V ~ 5.5V
CPU		-
FLASH MEMORY		32bit ARM
ENVIRONMENTAL	AMBIENT LIGHT	0 ~ 5000Lux(fluorescent light), 0 ~ 100,000Lux(daylight)
	WORKING CURRENT	142mA
	STAND-BY CURRENT	42mA
	TEMPERATURE (OPERATING)	-10°C ~ 50°C
	TEMPERATURE (STORAGE)	-20°C ~ 60°C
	HUMIDITY	5% ~ 95%(non-condensing)
	DECODING CAPABILITY	Codabar, Code11, Code39, Code32, Interleaved 2 of 5, Industrial 2 of 5, Matrix 2 of 5, Code93, Code128, GS1-128, UPC-A, UPC-E, EAN 8, EAN 13, GS1 DataBar, RSS14, GS1 DataBar Limited, GS1 DataBar Expanded, etc.
	DROP	PDF417, Micro PDF417, QR Code, Micro QR, Data Matrix, Aztec Code
	IP	IP54
	ACCESSORY	STANDARD



**NBS-8550C
(2.4G Cradle)**

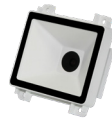


**NBS-8550D
(2.4G Dongle)**

PRODUCT SPEC

DATA CAPTURE	LIGHT SOURCE	White LED (Lighting) RED aiming light	
	IMAGE SIZE	640 × 480 pixels	
	RESOLUTION	> 4mil	
	SCANNING SPEED	60 fps	
	DEPTH OF SCAN FIELD	Android/Windows/Linux/IOS	
	PRINT CONTRAST	50-390mm(13mil code39)	
	INDICATOR	25% minimum reflective difference	
	SCAN MODE	LED indicator light, buzzer	
	SCAN ANGLE	Trig / Common / Continuous / Auto Sensing Mode	
	PHYSICAL	INTERFACE	rotate 360°, inclination 65°, elevation 60°
WIRELESS TRANSMISSION DISTANCE		-	
MATERIALS		USB / USB-VCP	
DIMENSION (LxWxH)		Bluetooth :30 meters 2.4G:80 meters	
WEIGHT		14.7 x 90.6 x 62.8 mm	14.7 x 90.6 x 62.8 mm
VOLTAGE		Receiver: 15 x 6 x 19 mm	Charging base: 165.7 x 71.1 x 52.6
BATTERY		Scanner:185g Receiver: 1.6g	Scanner : 188.4g Charging base : 318.3g
TFT COLOR SCREEN		DC 5V	
CPU		Replaceable & Rechargeable lithium battery, 2600mAh	
FLASH MEMORY		32bit ARM	
ENVIRONMENTAL	AMBIENT LIGHT	0~5000Lux(fluorescent), 0~100,000Lux(Sunlight)	
	WORKING CURRENT	250mah	
	STAND-BY CURRENT	<90mA	
	TEMPERATURE (OPERATING)	-10°C ~ 50°C	
	TEMPERATURE (STORAGE)	-10°C ~ 50°C	
	HUMIDITY	5% ~ 95%(relative humidity non-condensing)	
	DECODING CAPABILITY	Codabar, Code11, Code39、Code32, Interleaved 2 of 5, Industrial 2 of 5, Matrix 2 of 5, Code93,Code128, GS1-128, UPC-A, UPC-E, EAN 8, EAN 13, GS1 DataBar(RSS14), GS1 DataBar Limited, GS1 DataBar Expanded, etc	
	DROP	-	
	IP	USB cable (type C)	
	ACCESSORY	STANDARD	-

2D Wired Kiosk



NBS-8202K

2D Omni Wired (Desktop type)



NBS-8202S

PRODUCT SPEC

	NBS-8202K	NBS-8202S	
DATA CAPTURE	LIGHT SOURCE	White light LED	Red LED (Lighting) Color Temperature 650nm LED
	IMAGE SIZE	640 × 480 pixels	1280× 800 pixels
	RESOLUTION	> 5mil	> 3mil
	SCANNING SPEED	30fps	60fps
	DEPTH OF SCAN FIELD	EAN13: 20mm~130mm @13MIL PCS90%	5-280mm(13mil UPC/EAN 100%,PCS=90%)
	PRINT CONTRAST	-	15%
	INDICATOR	Buzzer	Tone & Volume adjustable
	SCAN MODE	Sensing Scan	Continuous
	SCAN ANGLE	Rotate 360° , Dip 65° , Elevation 60°	Deflection 360° Inclination ±65° Rotation ±60°
	PHYSICAL	INTERFACE	RS232, USB
WIRELESS TRANSMISSION DISTANCE		-	-
MATERIALS		ABS+PC	ABS+PC
DIMENSION (LxWxH)		65.1 × 61.6 × 33 mm	98 × 98 ×152 mm
WEIGHT		-	350g (Inclu.cable)
VOLTAGE		5 VDC±5%	DC 5V ± 0.5V
BATTERY		-	-
TFT COLOR SCREEN		-	-
CPU		32bit MIPS @1G Hz	ARM 32
FLASH MEMORY		-	-
ENVIRONMENTAL	AMBIENT LIGHT	-	0~5000Lux (fluorescence), 0~100,000 Lux (sunlight)
	WORKING CURRENT	108mA (Typical value), 114mA (Max value)	<450mA
	STAND-BY CURRENT	50mA	<236mA
	TEMPERATURE (OPERATING)	-20°C ~ 60°C	-10°C ~ 50°C
	TEMPERATURE (STORAGE)	-40°C ~ 70°C	-20°C ~ 60°C
	HUMIDITY	5% to 95% (operating)	5% to 95%
	DECODE CAPABILITY	EAN-13, EAN-8, UPC-A, UPC-E, ISSN, ISBN, Codabar, Code 128 (FNC1、 FNC2、 FNC3), Code 93, ITF-6, ITF-14, Interleaved 2 of 5, Industrial 2 of 5, Standard 2 of 5, Matrix 2 of 5,GS1 Databar (RSS-Expand, RSS-Limited, RSS-14), Code 39(Code 39 FULL ASCII), Code 11, MSI-Plessey, Plessey , etc	Codabar, Code11, Code39, Code32, Interleaved 2 of 5, Industrial 2 of 5, Matrix 2 of 5, Code93, Code128, GS1-128, UPC-A, UPC-E, EAN 8, EAN 13, GS1 DataBar, RSS14, GS1 DataBar Limited, GS1 DataBar Expanded, etc.
	2D	PDF417, Data Matrix, QR Code, etc	PDF417, Micro PDF417, QR Code, Micro QR, Data Matrix, Aztec Code
	DROP	-	1.5M
	IP	-	IP54
ACCESSORY	STANDARD	USB Cable	

03/2026

Copyright © 2026 Aroot Co., Ltd. All right reserved.
All specifications and designs are subject to change without notice.



sewoo

Aroot CO., Ltd.
Republic of Korea [Head Office / R&D Center]
28-6, Gajangsaneopdong-ro, Osan-si, Gyeonggi-do, 18103, Republic of Korea
T. +82-31-8077-5000 F. +82-31-624-5310 E. sales@miniprinter.com